

NOTES:

1. All elevations shown are on 4.5' x 6.5' grid.
2. All elevations shown are on 4.5' x 6.5' grid.
3. All elevations shown are on 4.5' x 6.5' grid.
4. All elevations shown are on 4.5' x 6.5' grid.
5. All elevations shown are on 4.5' x 6.5' grid.
6. All elevations shown are on 4.5' x 6.5' grid.
7. All elevations shown are on 4.5' x 6.5' grid.
8. All elevations shown are on 4.5' x 6.5' grid.
9. All elevations shown are on 4.5' x 6.5' grid.
10. All elevations shown are on 4.5' x 6.5' grid.

OCEAN COUNTY PLANNING BOARD
 Date: 1/17/73
 This map complies with Revised Ordinance No. 277 of 1972.

Approved by
Walter Stoddard
 Chairman

MANCHESTER TOWNSHIP PLANNING BOARD
 Date: 1/24/73
Frank J. ...
John ...

1-23-73
Harold ...

2/1/73
John ...

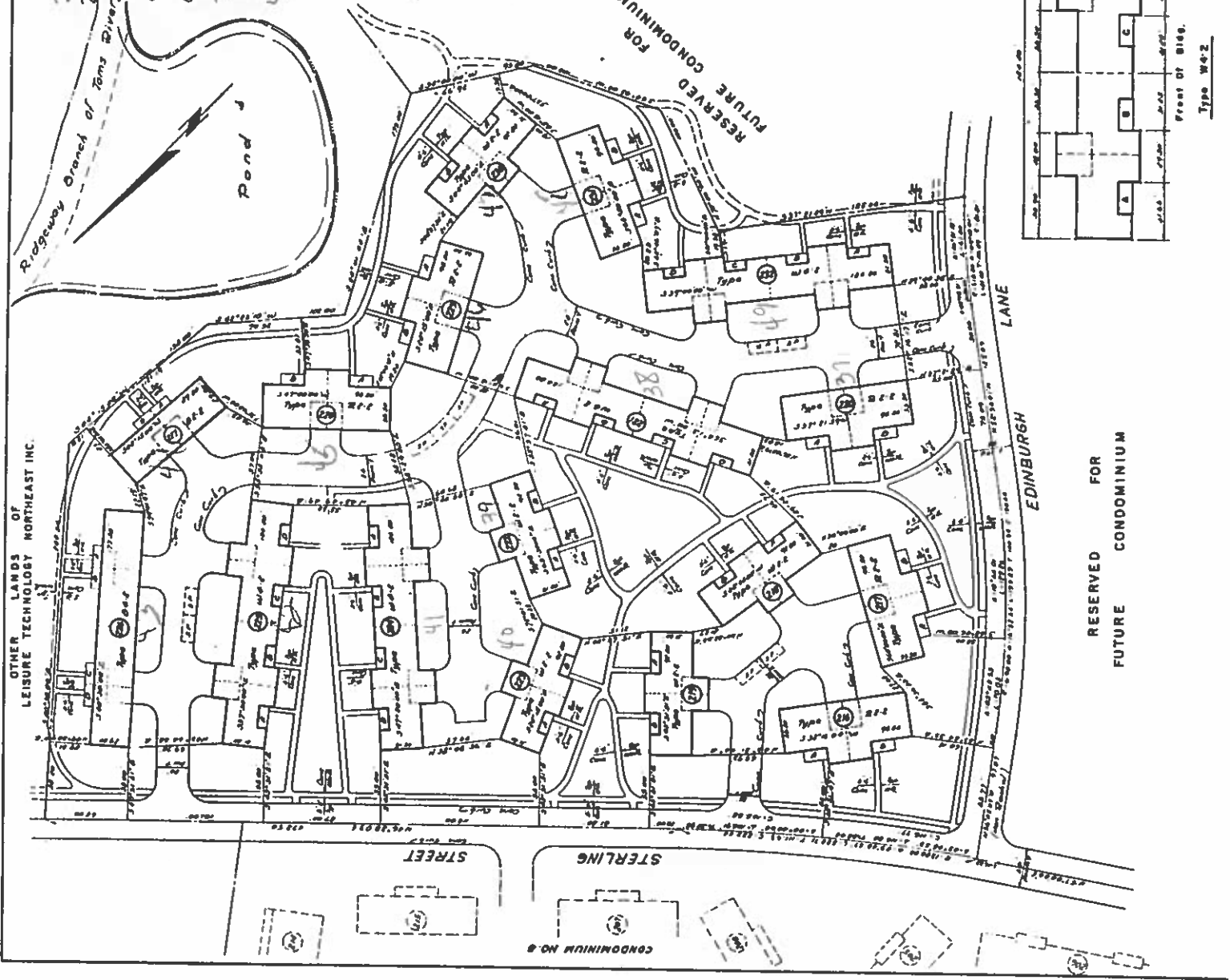
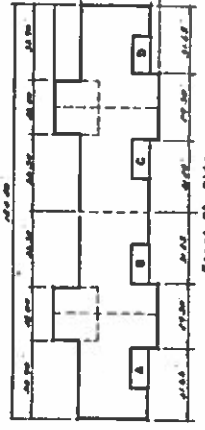
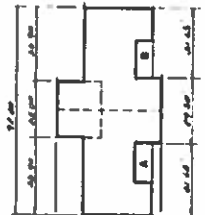
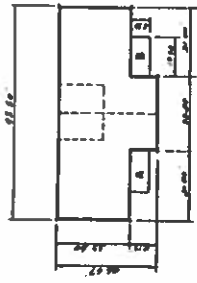
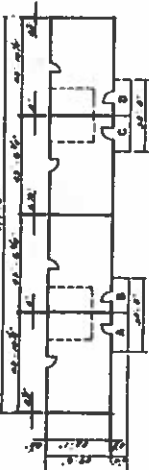
1/23/73
John ...

LEISURE TECHNOLOGY NORTHWEST, INC.
John ...

John ...

LEISURE VILLAGE WEST
 MANCHESTER TOWNSHIP OCEAN COUNTY, N.J.
FINAL MAP OF
LEISURE VILLAGE WEST
CONDOMINIUM NO. 9
 Prepared by: *Donald W. Smith Associates*

Unit	Area	Volume	Area	Volume	Area	Volume	Area	Volume
101	1,100	1,100	1,100	1,100	1,100	1,100	1,100	1,100
102	1,100	1,100	1,100	1,100	1,100	1,100	1,100	1,100
103	1,100	1,100	1,100	1,100	1,100	1,100	1,100	1,100
104	1,100	1,100	1,100	1,100	1,100	1,100	1,100	1,100
105	1,100	1,100	1,100	1,100	1,100	1,100	1,100	1,100
106	1,100	1,100	1,100	1,100	1,100	1,100	1,100	1,100
107	1,100	1,100	1,100	1,100	1,100	1,100	1,100	1,100
108	1,100	1,100	1,100	1,100	1,100	1,100	1,100	1,100
109	1,100	1,100	1,100	1,100	1,100	1,100	1,100	1,100
110	1,100	1,100	1,100	1,100	1,100	1,100	1,100	1,100
111	1,100	1,100	1,100	1,100	1,100	1,100	1,100	1,100
112	1,100	1,100	1,100	1,100	1,100	1,100	1,100	1,100
113	1,100	1,100	1,100	1,100	1,100	1,100	1,100	1,100
114	1,100	1,100	1,100	1,100	1,100	1,100	1,100	1,100
115	1,100	1,100	1,100	1,100	1,100	1,100	1,100	1,100
116	1,100	1,100	1,100	1,100	1,100	1,100	1,100	1,100
117	1,100	1,100	1,100	1,100	1,100	1,100	1,100	1,100
118	1,100	1,100	1,100	1,100	1,100	1,100	1,100	1,100
119	1,100	1,100	1,100	1,100	1,100	1,100	1,100	1,100
120	1,100	1,100	1,100	1,100	1,100	1,100	1,100	1,100



2- 12
 3- 5
 4- 5
 5- 6
 6- 6

37-42