

NOTES:  
 1. The proposed subdivision is in accordance with the provisions of the Subdivision Map Act, N.J.A.C. 17:27.  
 2. The proposed subdivision is in accordance with the provisions of the Condominium Act, N.J.A.C. 17:29.  
 3. The proposed subdivision is in accordance with the provisions of the Planning Board Act, N.J.A.C. 17:28.  
 4. The proposed subdivision is in accordance with the provisions of the Municipal Code, N.J.A.C. 17:26.

OCEAN COUNTY PLANNING BOARD

11/20/12

MANCHESTER TOWNSHIP PLANNING BOARD

1/26/13

*John P. Ryan*  
 Mayor, Manchester

*John P. Ryan*  
 Mayor, Manchester

*John P. Ryan*  
 Mayor, Manchester

*John P. Ryan*  
 Mayor, Manchester

*John P. Ryan*  
 Mayor, Manchester

*John P. Ryan*  
 Mayor, Manchester

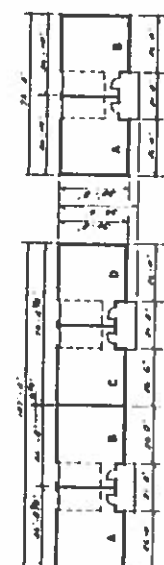
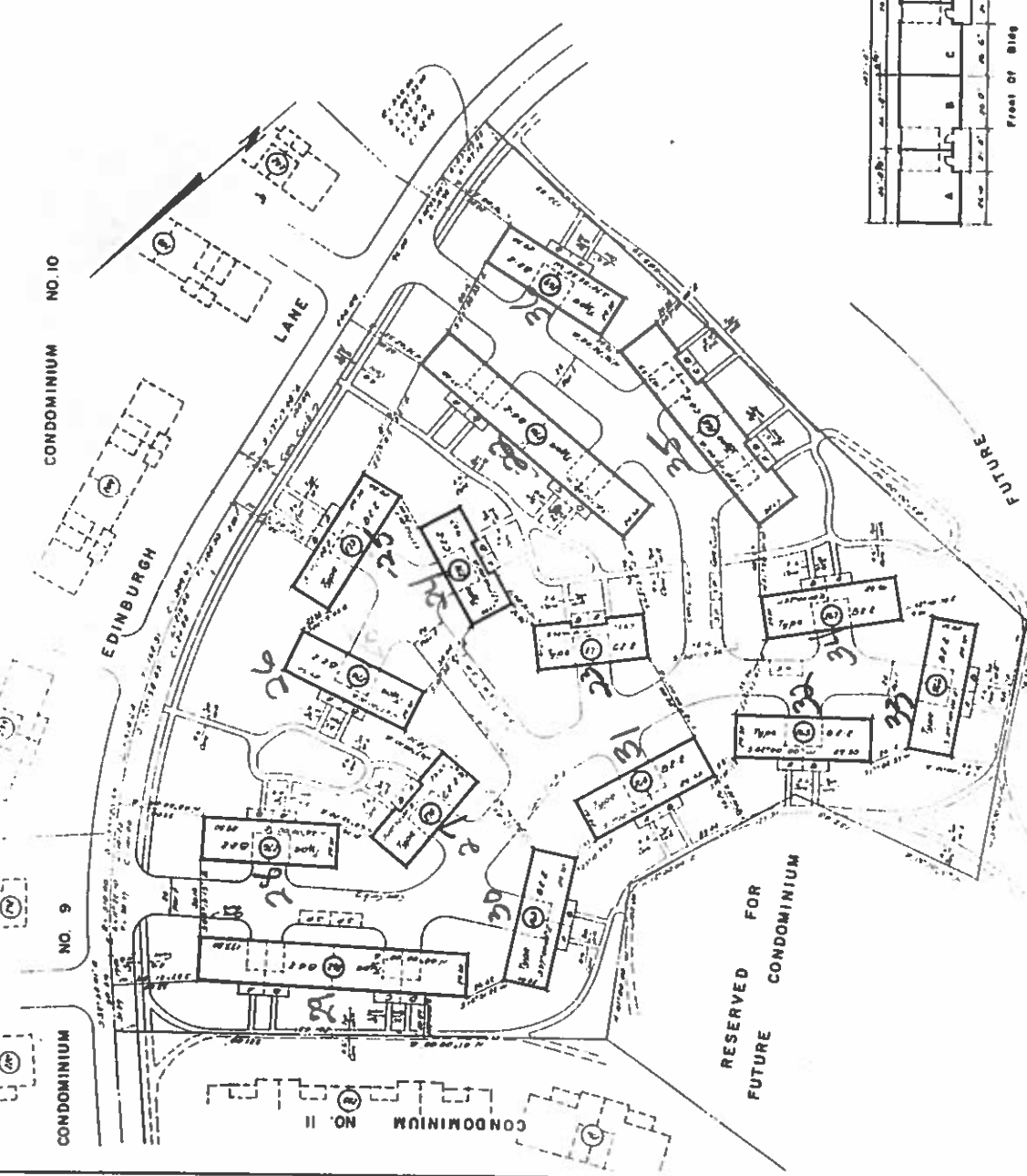
*John P. Ryan*  
 Mayor, Manchester

LEISURE VILLAGE WEST  
 MANCHESTER TOWNSHIP, OCEAN COUNTY, N.J.

FINAL MAP OF  
 LEISURE VILLAGE WEST  
 CONDOMINIUM NO. 12

Donald W. Smith Associates

Unit	Area	Volume	Area	Volume
1	1,120	1,120	1,120	1,120
2	1,120	1,120	1,120	1,120
3	1,120	1,120	1,120	1,120
4	1,120	1,120	1,120	1,120
5	1,120	1,120	1,120	1,120
6	1,120	1,120	1,120	1,120
7	1,120	1,120	1,120	1,120
8	1,120	1,120	1,120	1,120
9	1,120	1,120	1,120	1,120
10	1,120	1,120	1,120	1,120
11	1,120	1,120	1,120	1,120
12	1,120	1,120	1,120	1,120
13	1,120	1,120	1,120	1,120
14	1,120	1,120	1,120	1,120
15	1,120	1,120	1,120	1,120
16	1,120	1,120	1,120	1,120
17	1,120	1,120	1,120	1,120
18	1,120	1,120	1,120	1,120
19	1,120	1,120	1,120	1,120
20	1,120	1,120	1,120	1,120
21	1,120	1,120	1,120	1,120
22	1,120	1,120	1,120	1,120
23	1,120	1,120	1,120	1,120
24	1,120	1,120	1,120	1,120
25	1,120	1,120	1,120	1,120
26	1,120	1,120	1,120	1,120
27	1,120	1,120	1,120	1,120
28	1,120	1,120	1,120	1,120
29	1,120	1,120	1,120	1,120
30	1,120	1,120	1,120	1,120
31	1,120	1,120	1,120	1,120
32	1,120	1,120	1,120	1,120
33	1,120	1,120	1,120	1,120
34	1,120	1,120	1,120	1,120
35	1,120	1,120	1,120	1,120
36	1,120	1,120	1,120	1,120



2-  
 3-  
 4-  
 5-  
 6-