

NOTES

1. The Condominium shall be subject to the provisions of the Condominium Act, N.J.A.C. 17:27.
2. The Condominium shall be subject to the provisions of the Condominium Act, N.J.A.C. 17:27.
3. The Condominium shall be subject to the provisions of the Condominium Act, N.J.A.C. 17:27.
4. The Condominium shall be subject to the provisions of the Condominium Act, N.J.A.C. 17:27.
5. The Condominium shall be subject to the provisions of the Condominium Act, N.J.A.C. 17:27.
6. The Condominium shall be subject to the provisions of the Condominium Act, N.J.A.C. 17:27.
7. The Condominium shall be subject to the provisions of the Condominium Act, N.J.A.C. 17:27.
8. The Condominium shall be subject to the provisions of the Condominium Act, N.J.A.C. 17:27.
9. The Condominium shall be subject to the provisions of the Condominium Act, N.J.A.C. 17:27.
10. The Condominium shall be subject to the provisions of the Condominium Act, N.J.A.C. 17:27.

OCEAN COUNTY PLANNING BOARD

17 APR 1973

W. J. ...

MANCHESTER TOWNSHIP PLANNING BOARD

11/21/73

Frank ...

W. J. ...

W. J. ...

John ...

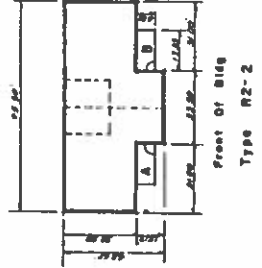
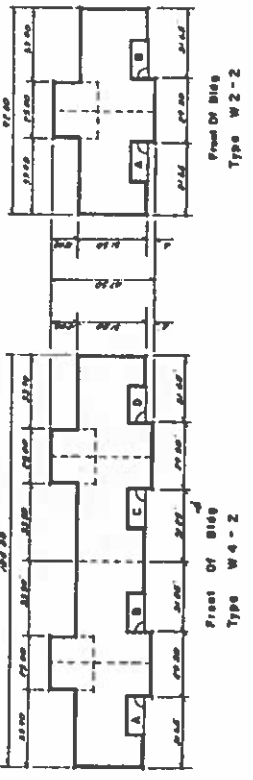
John A. ...

James ...

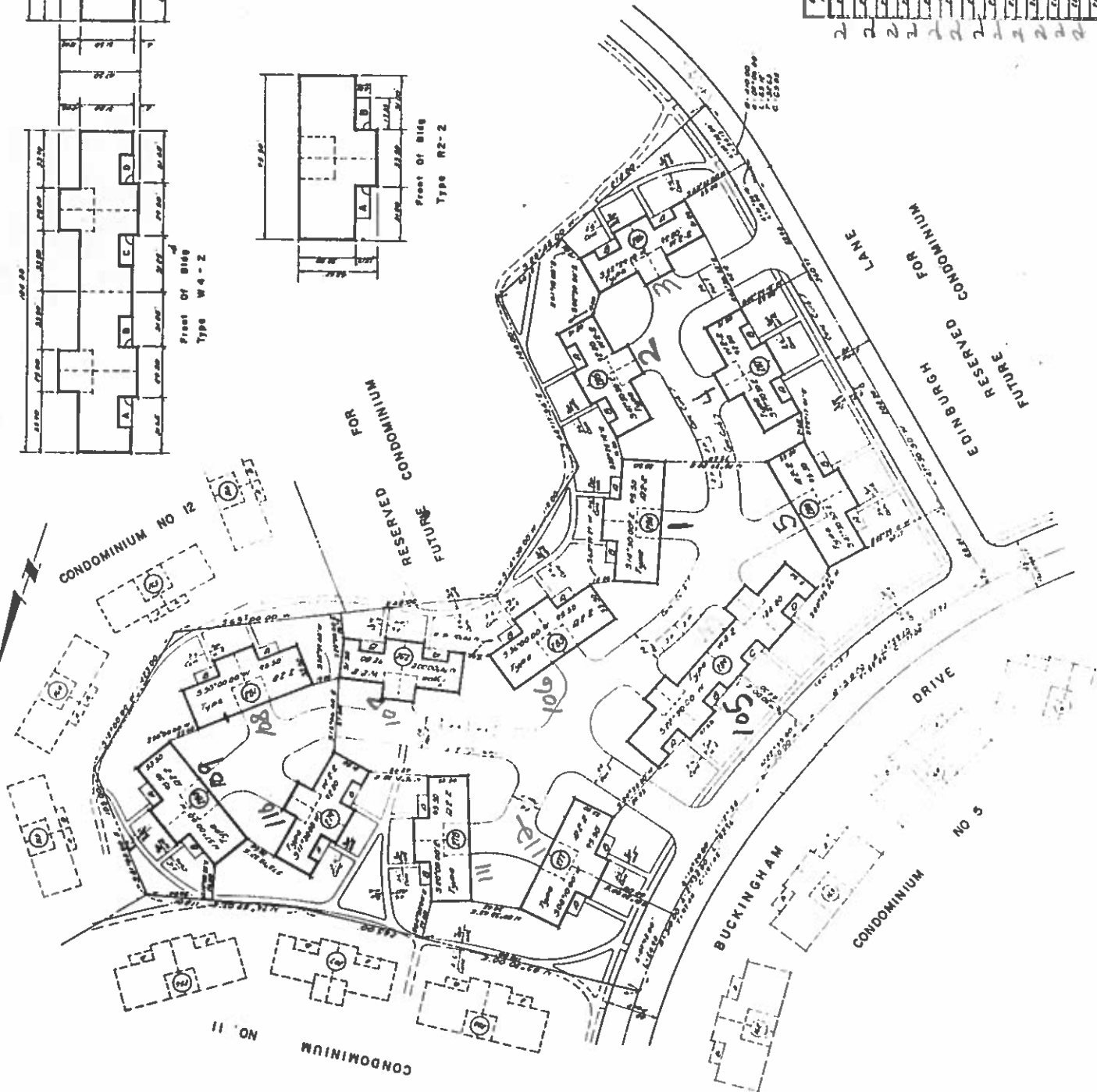
Donald ...

LEISURE VILLAGE WEST
MANCHESTER TOWNSHIP OCEAN COUNTY, N.J.
FINAL MAP OF
LEISURE VILLAGE WEST
CONDOMINIUM NO 13

Donald ...



Unit	Area	Price	Notes
101	1,200	120,000	
102	1,200	120,000	
103	1,200	120,000	
104	1,200	120,000	
105	1,200	120,000	
106	1,200	120,000	
107	1,200	120,000	
108	1,200	120,000	
109	1,200	120,000	
110	1,200	120,000	
111	1,200	120,000	
112	1,200	120,000	
113	1,200	120,000	
114	1,200	120,000	
115	1,200	120,000	
116	1,200	120,000	
117	1,200	120,000	
118	1,200	120,000	
119	1,200	120,000	
120	1,200	120,000	
121	1,200	120,000	
122	1,200	120,000	
123	1,200	120,000	
124	1,200	120,000	
125	1,200	120,000	
126	1,200	120,000	
127	1,200	120,000	
128	1,200	120,000	
129	1,200	120,000	
130	1,200	120,000	
131	1,200	120,000	
132	1,200	120,000	
133	1,200	120,000	
134	1,200	120,000	
135	1,200	120,000	
136	1,200	120,000	
137	1,200	120,000	
138	1,200	120,000	
139	1,200	120,000	
140	1,200	120,000	
141	1,200	120,000	
142	1,200	120,000	
143	1,200	120,000	
144	1,200	120,000	
145	1,200	120,000	
146	1,200	120,000	
147	1,200	120,000	
148	1,200	120,000	
149	1,200	120,000	
150	1,200	120,000	
151	1,200	120,000	
152	1,200	120,000	
153	1,200	120,000	
154	1,200	120,000	
155	1,200	120,000	
156	1,200	120,000	
157	1,200	120,000	
158	1,200	120,000	
159	1,200	120,000	
160	1,200	120,000	
161	1,200	120,000	
162	1,200	120,000	
163	1,200	120,000	
164	1,200	120,000	
165	1,200	120,000	
166	1,200	120,000	
167	1,200	120,000	
168	1,200	120,000	
169	1,200	120,000	
170	1,200	120,000	
171	1,200	120,000	
172	1,200	120,000	
173	1,200	120,000	
174	1,200	120,000	
175	1,200	120,000	
176	1,200	120,000	
177	1,200	120,000	
178	1,200	120,000	
179	1,200	120,000	
180	1,200	120,000	
181	1,200	120,000	
182	1,200	120,000	
183	1,200	120,000	
184	1,200	120,000	
185	1,200	120,000	
186	1,200	120,000	
187	1,200	120,000	
188	1,200	120,000	
189	1,200	120,000	
190	1,200	120,000	
191	1,200	120,000	
192	1,200	120,000	
193	1,200	120,000	
194	1,200	120,000	
195	1,200	120,000	
196	1,200	120,000	
197	1,200	120,000	
198	1,200	120,000	
199	1,200	120,000	
200	1,200	120,000	



2-12
3-1
4-1
5-1
6-1