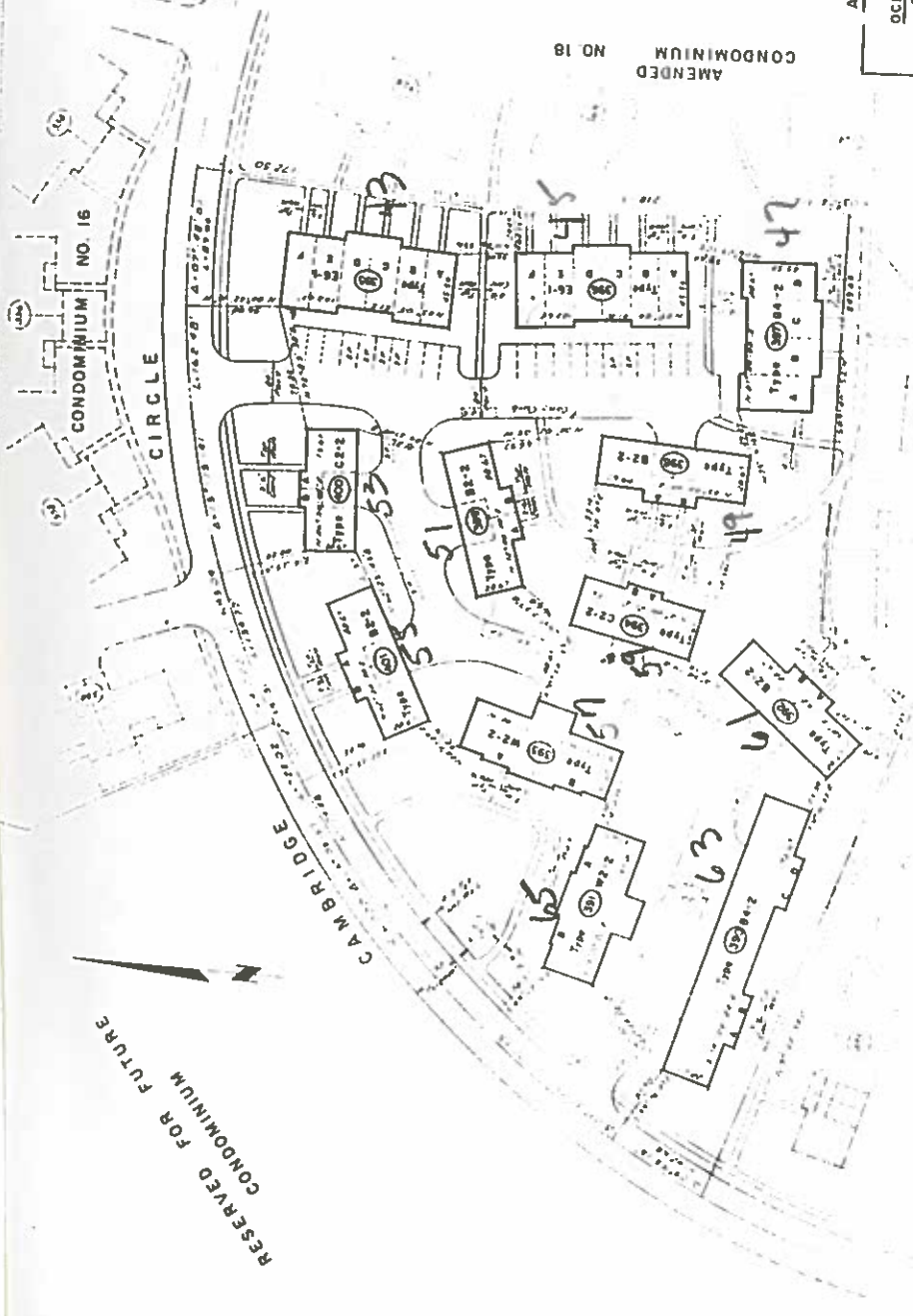
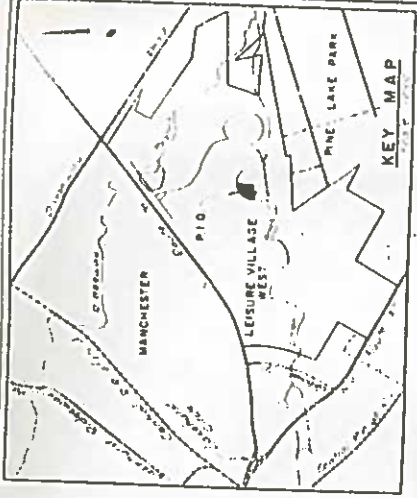


2-8
4-2
6-2

RESERVED FOR FUTURE CONDOMINIUM



UNIT NO.	TYPE	AREA	PRICE
101	1-B	1,200	120,000
102	1-B	1,200	120,000
103	1-B	1,200	120,000
104	1-B	1,200	120,000
105	1-B	1,200	120,000
106	1-B	1,200	120,000
107	1-B	1,200	120,000
108	1-B	1,200	120,000
109	1-B	1,200	120,000
110	1-B	1,200	120,000
111	1-B	1,200	120,000
112	1-B	1,200	120,000
113	1-B	1,200	120,000
114	1-B	1,200	120,000
115	1-B	1,200	120,000
116	1-B	1,200	120,000
117	1-B	1,200	120,000
118	1-B	1,200	120,000
119	1-B	1,200	120,000
120	1-B	1,200	120,000
121	1-B	1,200	120,000
122	1-B	1,200	120,000
123	1-B	1,200	120,000
124	1-B	1,200	120,000
125	1-B	1,200	120,000
126	1-B	1,200	120,000
127	1-B	1,200	120,000
128	1-B	1,200	120,000
129	1-B	1,200	120,000
130	1-B	1,200	120,000
131	1-B	1,200	120,000
132	1-B	1,200	120,000
133	1-B	1,200	120,000
134	1-B	1,200	120,000
135	1-B	1,200	120,000
136	1-B	1,200	120,000
137	1-B	1,200	120,000
138	1-B	1,200	120,000
139	1-B	1,200	120,000
140	1-B	1,200	120,000
141	1-B	1,200	120,000
142	1-B	1,200	120,000
143	1-B	1,200	120,000
144	1-B	1,200	120,000
145	1-B	1,200	120,000
146	1-B	1,200	120,000
147	1-B	1,200	120,000
148	1-B	1,200	120,000
149	1-B	1,200	120,000
150	1-B	1,200	120,000
151	1-B	1,200	120,000
152	1-B	1,200	120,000
153	1-B	1,200	120,000
154	1-B	1,200	120,000
155	1-B	1,200	120,000
156	1-B	1,200	120,000
157	1-B	1,200	120,000
158	1-B	1,200	120,000
159	1-B	1,200	120,000
160	1-B	1,200	120,000
161	1-B	1,200	120,000
162	1-B	1,200	120,000
163	1-B	1,200	120,000
164	1-B	1,200	120,000
165	1-B	1,200	120,000
166	1-B	1,200	120,000
167	1-B	1,200	120,000
168	1-B	1,200	120,000
169	1-B	1,200	120,000
170	1-B	1,200	120,000
171	1-B	1,200	120,000
172	1-B	1,200	120,000
173	1-B	1,200	120,000
174	1-B	1,200	120,000
175	1-B	1,200	120,000
176	1-B	1,200	120,000
177	1-B	1,200	120,000
178	1-B	1,200	120,000
179	1-B	1,200	120,000
180	1-B	1,200	120,000
181	1-B	1,200	120,000
182	1-B	1,200	120,000
183	1-B	1,200	120,000
184	1-B	1,200	120,000
185	1-B	1,200	120,000
186	1-B	1,200	120,000
187	1-B	1,200	120,000
188	1-B	1,200	120,000
189	1-B	1,200	120,000
190	1-B	1,200	120,000
191	1-B	1,200	120,000
192	1-B	1,200	120,000
193	1-B	1,200	120,000
194	1-B	1,200	120,000
195	1-B	1,200	120,000
196	1-B	1,200	120,000
197	1-B	1,200	120,000
198	1-B	1,200	120,000
199	1-B	1,200	120,000
200	1-B	1,200	120,000



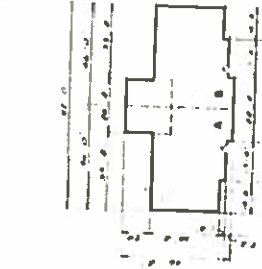
NOTES:
 1. All Condominium Units are to be of 1,200 sq. ft. area.
 2. Common Elements are to be shared by all units.
 3. Common Elements include: Parking, Stairs, Hallways, etc.
 4. Common Elements are to be maintained by the Association.
 5. Common Elements are to be used for the benefit of all units.
 6. Common Elements are to be used in accordance with the Association's Bylaws.
 7. Common Elements are to be used in accordance with the Association's Rules and Regulations.
 8. Common Elements are to be used in accordance with the Association's Covenants, Conditions and Restrictions.
 9. Common Elements are to be used in accordance with the Association's Declaration of Condominium.

OCEAN COUNTY PLANNING BOARD
 10/17/73

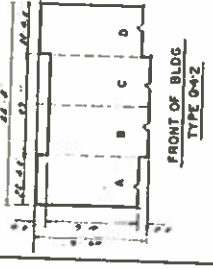
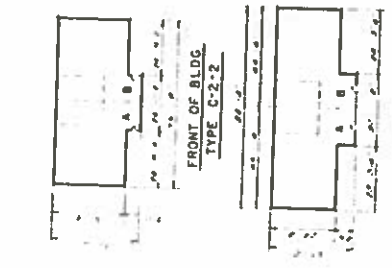
MANCHESTER TOWNSHIP PLANNING BOARD
 6/29/73

AMENDED PLAN APPROVAL
 OCEAN COUNTY PLANNING BOARD
 Approved By: *[Signature]*
 MANCHESTER TOWNSHIP PLANNING BOARD
 Approved By: *[Signature]*

CONDOMINIUM NO. 17



CONDOMINIUM NO. 19



FRONT OF BLDG
TYPE B-2-2

LEISURE VILLAGE WEST
 OCEAN COUNTY, NJ
 FINAL MAP OF
 LEISURE VILLAGE WEST
 CONDOMINIUM NO. 20
 AMENDED
 Donald T. Smith Associates