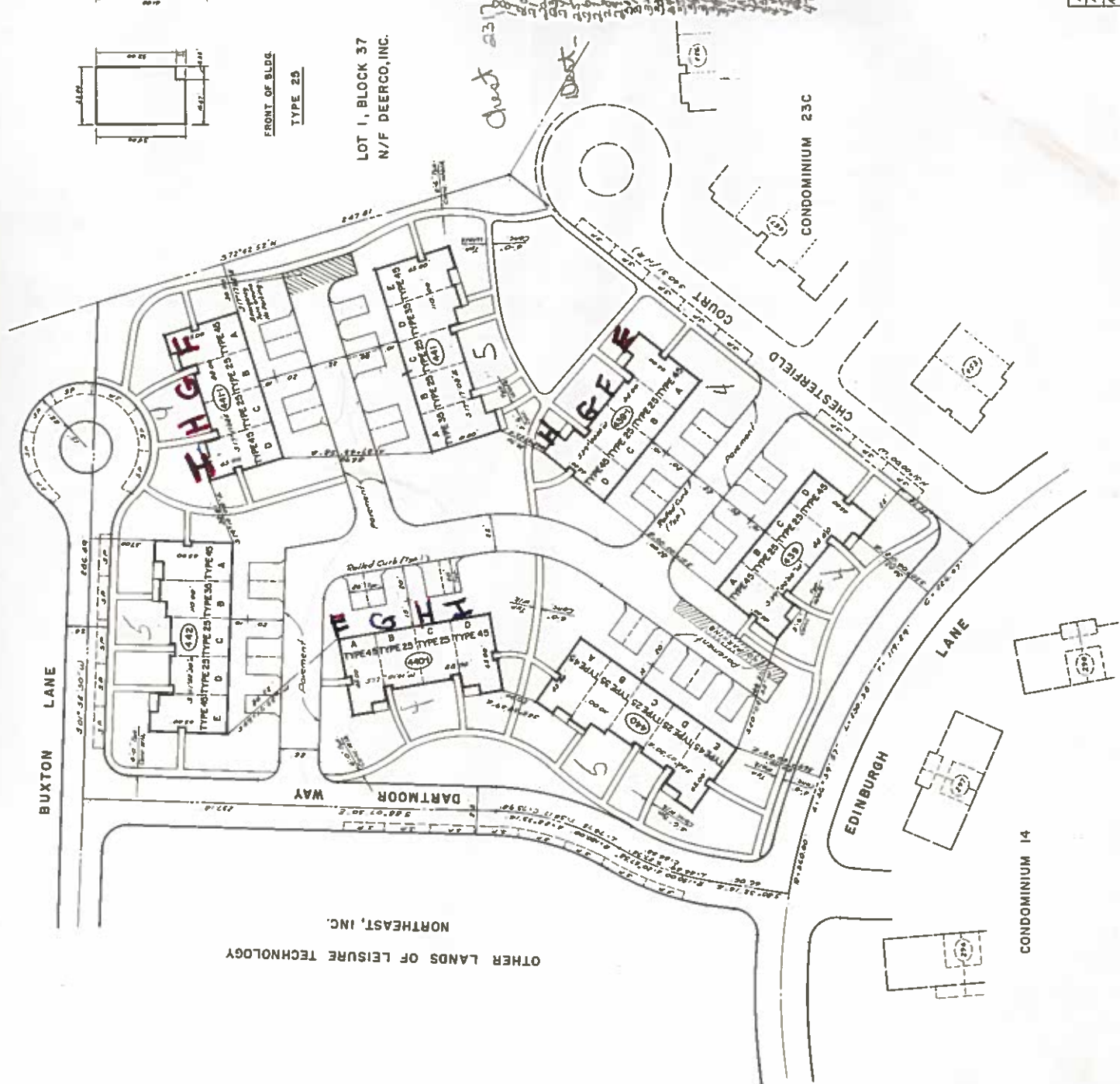
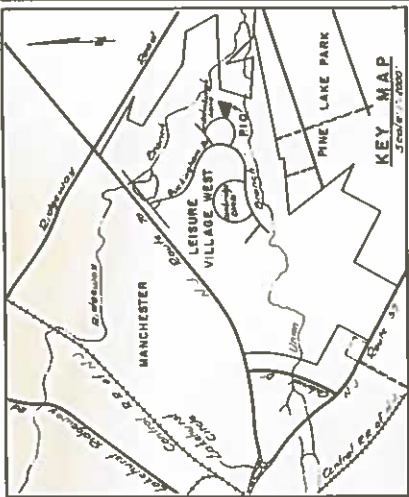


FRONT OF BLDG. TYPE 25
FRONT OF BLDG. TYPE 35
FRONT OF BLDG. TYPE 45

LOT 1, BLOCK 37
N/F DEERCO, INC.



BLDG NO.	APT NO.	FIN FL	FIN FL ELEV.	FINCEL ELEV.	TOTAL ELEV.
401	A	2	42.50	38.00	42.50
401	B	2	42.50	38.00	42.50
401	C	2	42.50	38.00	42.50
401	D	2	42.50	38.00	42.50
401	E	2	42.50	38.00	42.50
402	A	2	42.50	38.00	42.50
402	B	2	42.50	38.00	42.50
402	C	2	42.50	38.00	42.50
402	D	2	42.50	38.00	42.50
402	E	2	42.50	38.00	42.50
403	A	2	42.50	38.00	42.50
403	B	2	42.50	38.00	42.50
403	C	2	42.50	38.00	42.50
403	D	2	42.50	38.00	42.50
403	E	2	42.50	38.00	42.50
404	A	2	42.50	38.00	42.50
404	B	2	42.50	38.00	42.50
404	C	2	42.50	38.00	42.50
404	D	2	42.50	38.00	42.50
404	E	2	42.50	38.00	42.50
405	A	2	42.50	38.00	42.50
405	B	2	42.50	38.00	42.50
405	C	2	42.50	38.00	42.50
405	D	2	42.50	38.00	42.50
405	E	2	42.50	38.00	42.50



NOTES:

- All Elevations shown are to 0.1' of 63' 0" G.S.M.
- All Elevations shown are proposed as of 10-1-76
- All Roads shown within the limits of this sheet will be under construction.
- All measurements shown are proposed as of 10-1-76.
- Condominium 23B contains 51 units.
- Condominium 23B contains 2,598 sq. ft. area.
- 23B indicates streets and various parking spaces. All other service drives only in such designated parking spaces. All other unaffiliated vehicles prohibited from parking in rear service drives.

OCEAN COUNTY PLANNING BOARD

Date: Dec 15, 1976
This plan complies with revised standards 40-117.2 & 40-117.10
Chairman: *Richard M. ...*

MANCHESTER TOWNSHIP PLANNING BOARD

Approved By: *Donald W. ...*
Date: 12-17-76
Municipal Engineer: *Wanda ...*
Secretary: *...*

I hereby certify that we are the record holder of title to the lands delineated on this map and approve the filing thereof.

LEISURE TECHNOLOGY NORTHEAST, INC.
Secretary: *...*

LEISURE TECHNOLOGY NORTHEAST, INC.
Secretary: *...*

LEISURE TECHNOLOGY NORTHEAST, INC.
Secretary: *...*

MANCHESTER TOWNSHIP, OCEAN COUNTY, N.J.	17-98	71-600
LEISURE VILLAGE WEST	17-98	71-600
FINAL MAP OF	17-98	71-600
LEISURE VILLAGE WEST	17-98	71-600
CONDOMINIUM NO. 23B	17-98	71-600
AMENDED	17-98	71-600

2-
3-
4-
5-
6

Revised 12/17/76
Added to parking area lot 401, 402, 403, 404, 405
Revised 12/17/76
Added to parking area lot 401, 402, 403, 404, 405
Revised 12/17/76
Added to parking area lot 401, 402, 403, 404, 405