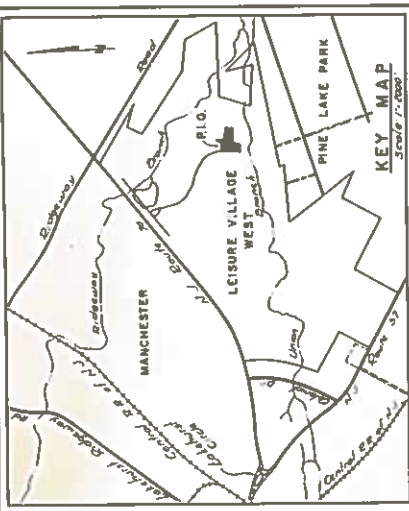


BLDG NO	APT NO	APT AREA	APT ELEV	APT NO	APT AREA	APT ELEV	TOTAL APT AREA	TOTAL APT ELEV	TOTAL APT NO	TOTAL APT ELEV
2	442	48.00	48.00	443	48.00	48.00	96.00	96.00	2	96.00
3	444	48.00	48.00	445	48.00	48.00	96.00	96.00	2	96.00
2	446	48.00	48.00	447	48.00	48.00	96.00	96.00	2	96.00
2	448	48.00	48.00	449	48.00	48.00	96.00	96.00	2	96.00
2	450	48.00	48.00	451	48.00	48.00	96.00	96.00	2	96.00



NOTES:

- All elevations shown are to 4.25' G.S. datum.
- All elevations shown are proposed as of 4-2-76.
- All roads shown within the limits of this tract will be under private ownership.
- All improvements shown are proposed as of 4-2-76.
- Condominium units contain 1,150 sq. ft. of living area.
- Units include storage and utility parking spaces. All service drives only on such designated parking spaces. All unattended vehicles prohibited from parking in rear service drives.

OCEAN COUNTY PLANNING BOARD
 Date: 16 June 1976
 This plan complies with revised Ordinance No. 157 of 10-27-74
 Approved By: *W. P. ...*
 Chairman

MANCHESTER TOWNSHIP PLANNING BOARD
 Date: 17/18/76
 Approved By: *...*
 Chairman

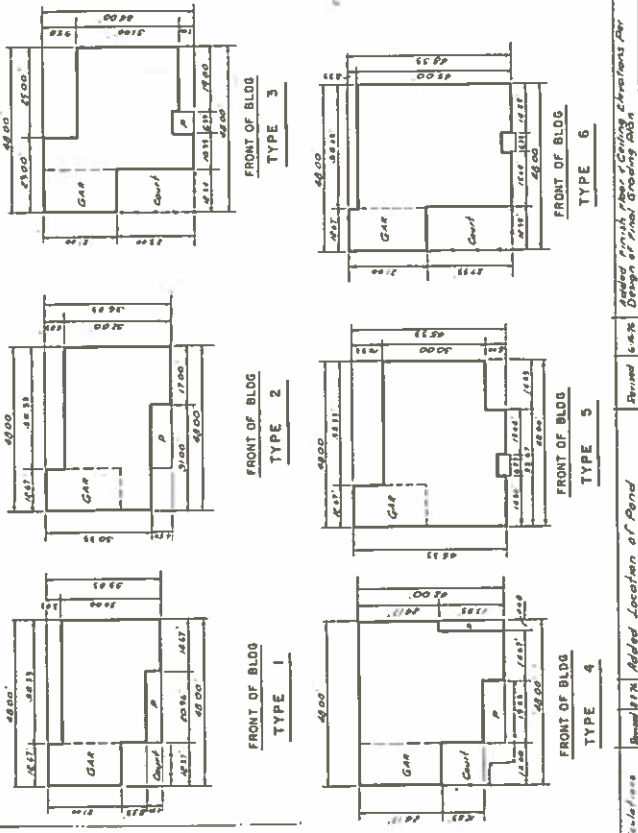
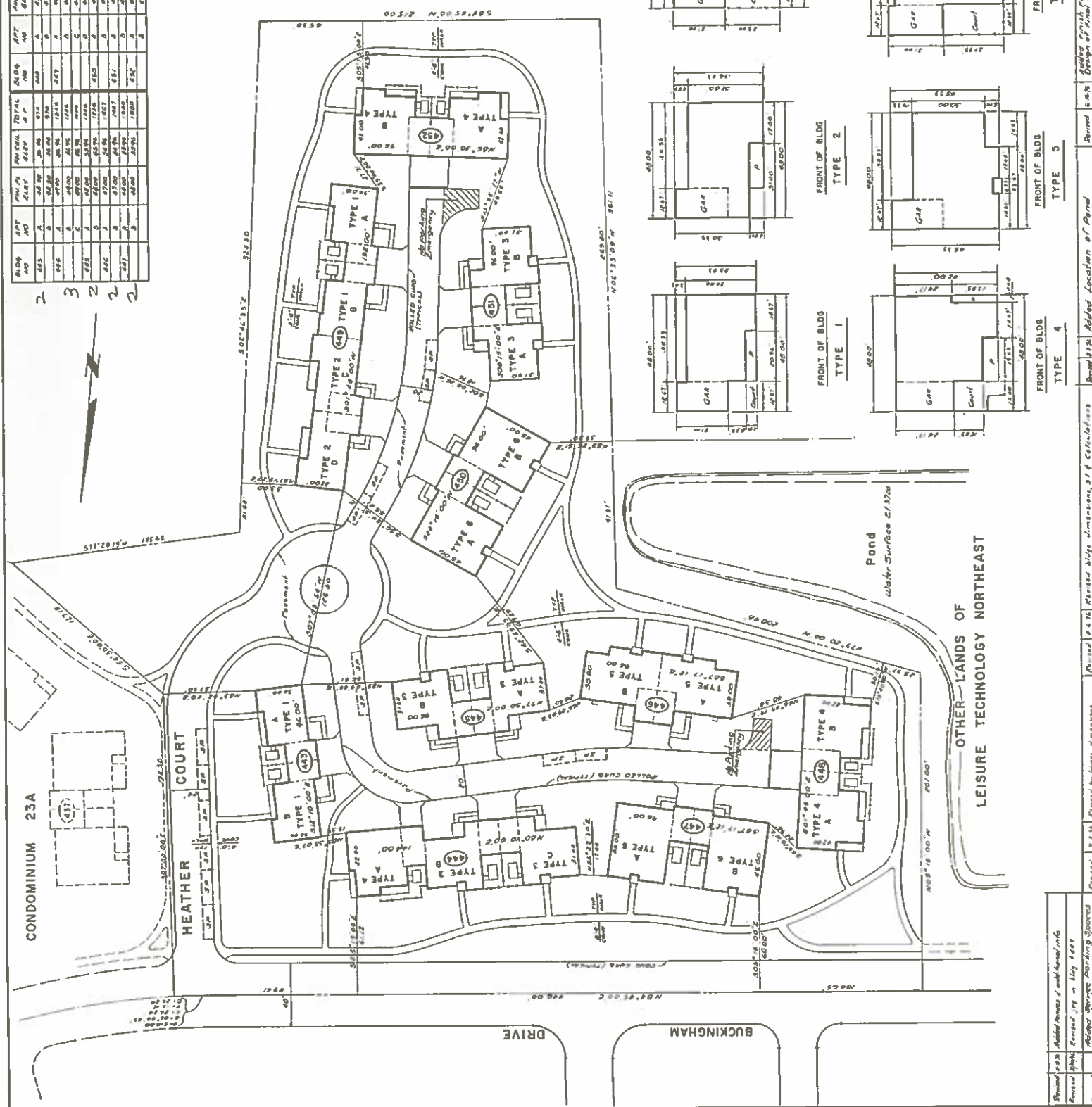
9/16/76
 I hereby certify that the Manchester Township Committee has approved this map for filing in the Ocean County Clerk's Office provided this map is filed on or before 12/1/76.
 Municipal Clerk
 I have carefully examined this map and find it conforms with the provisions of the municipal ordinances and requirements applicable thereto.
 Township Engineer

LEISURE TECHNOLOGY NORTHWEST, INC.
 President: *Edward M. ...*
 Secretary: *...*
 The Survey shown hereon and the Plans annexed thereto were prepared by the undersigned as a true and correct representation of the same in accordance with the provisions of the laws of the State of New Jersey.

LEISURE VILLAGE WEST
 MANCHESTER TOWNSHIP, OCEAN COUNTY, N.J.
FINAL MAP OF
LEISURE VILLAGE WEST
CONDOMINIUM NO. 24A

Prepared by: **Donald W. Smith Associates**
 Engineers - Planners - Surveyors
 1000 N. 1st St., Suite 100, Freehold, N.J. 07728
 Phone: 709-760-1111

OTHER LANDS OF LEISURE TECHNOLOGY NORTHEAST



2-8
 3-1
 4-1
 5
 6

Revised 9-27-76
 Revised 9-27-76
 Revised 9-27-76
 Revised 9-27-76

Revised 6-24-76
 Revised 6-24-76
 Revised 6-24-76
 Revised 6-24-76

Revised 6-24-76
 Revised 6-24-76
 Revised 6-24-76
 Revised 6-24-76