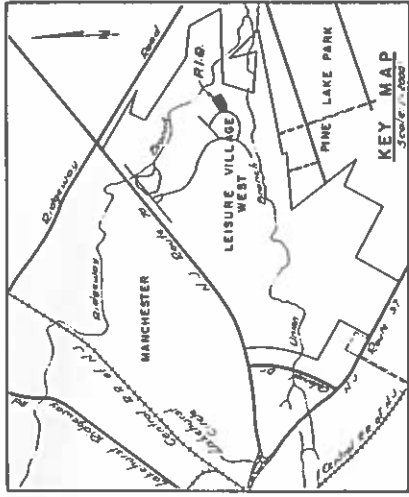


OTHER LANDS OF LEISURE TECHNOLOGY NORTHEAST INC.

Blg No	Appt No	Fin Fl. Elev	Fin Out. Elev	Per Sq Ft	Total Sq Ft
3	A	49.00	58.96	28.6	28.6
3	B	49.00	68.92	57.2	57.2
3	C	49.00	78.88	85.8	85.8
2	A	51.00	59.46	22.6	22.6
2	B	51.00	69.42	45.2	45.2
2	C	51.00	79.38	67.8	67.8
2	D	51.00	89.34	91.0	91.0
2	E	51.00	99.30	114.2	114.2
2	F	51.00	109.26	137.4	137.4
2	G	51.00	119.22	160.6	160.6
2	H	51.00	129.18	183.8	183.8
2	I	51.00	139.14	207.0	207.0
2	J	51.00	149.10	230.2	230.2
2	K	51.00	159.06	253.4	253.4
2	L	51.00	169.02	276.6	276.6
2	M	51.00	178.98	300.0	300.0
2	N	51.00	188.94	323.2	323.2
2	O	51.00	198.90	346.4	346.4
2	P	51.00	208.86	369.6	369.6
2	Q	51.00	218.82	392.8	392.8
2	R	51.00	228.78	416.0	416.0
2	S	51.00	238.74	439.2	439.2
2	T	51.00	248.70	462.4	462.4
2	U	51.00	258.66	485.6	485.6
2	V	51.00	268.62	508.8	508.8
2	W	51.00	278.58	532.0	532.0
2	X	51.00	288.54	555.2	555.2
2	Y	51.00	298.50	578.4	578.4
2	Z	51.00	308.46	601.6	601.6



NOTES

- All elevations shown are to U.S.C. of 83 datum.
- All elevations shown are proposed as of 5/16/78.
- All elevations shown within the limits of this map will be used.
- All elevations shown are proposed as of 5/16/78.
- Condominium 23B contains 18 units.
- Condominium 23C contains 18 units.
- Condominium 23D contains 18 units.
- Condominium 23E contains 18 units.
- Condominium 23F contains 18 units.
- Condominium 23G contains 18 units.
- Condominium 23H contains 18 units.
- Condominium 23I contains 18 units.
- Condominium 23J contains 18 units.
- Condominium 23K contains 18 units.
- Condominium 23L contains 18 units.
- Condominium 23M contains 18 units.
- Condominium 23N contains 18 units.
- Condominium 23O contains 18 units.
- Condominium 23P contains 18 units.
- Condominium 23Q contains 18 units.
- Condominium 23R contains 18 units.
- Condominium 23S contains 18 units.
- Condominium 23T contains 18 units.
- Condominium 23U contains 18 units.
- Condominium 23V contains 18 units.
- Condominium 23W contains 18 units.
- Condominium 23X contains 18 units.
- Condominium 23Y contains 18 units.
- Condominium 23Z contains 18 units.

OCEAN COUNTY PLANNING BOARD
 Date: 7/17/78
 This plan complies with revised standards of 1977 of 00 07 10
 Chairman: [Signature]

MANCHESTER TOWNSHIP PLANNING BOARD
 Approved by: [Signature]
 Date: 8/17/78
 Secretary: [Signature]

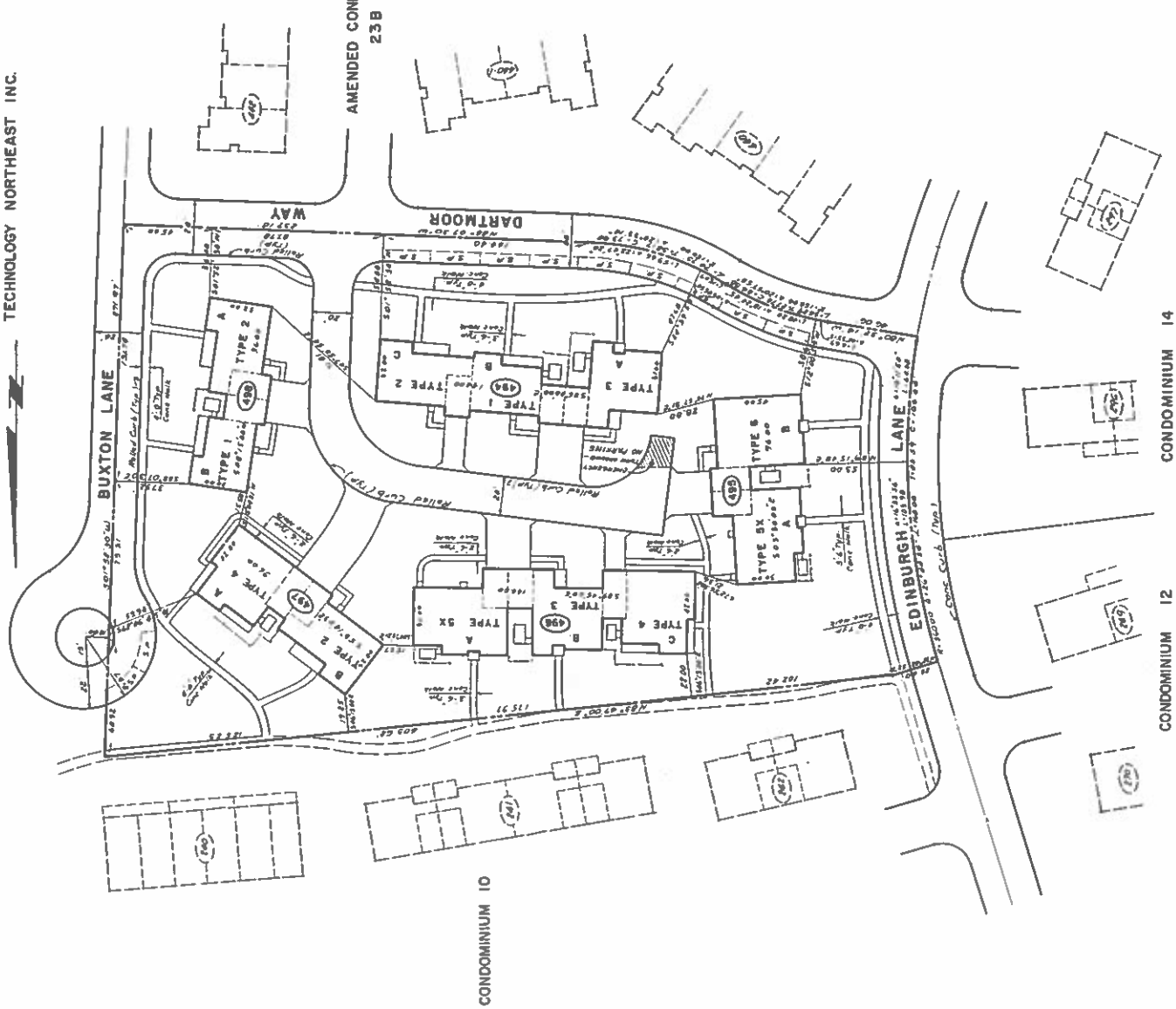
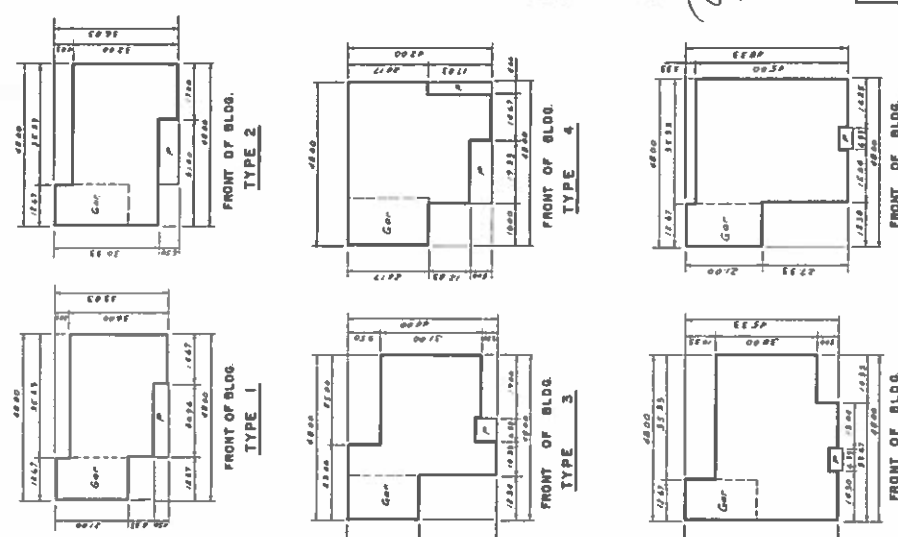
I certify that the Manchester Township Planning Board has approved this map as being in the best interests of the Township and that this map is filed as of date 8/17/78.
 Date: 8/17/78
 Secretary: [Signature]

I have carefully examined this map and find it conforms with the provisions of the municipal ordinances and requirements applicable thereto.
 Date: 8/17/78
 Chairman: [Signature]

I hereby certify that upon the record number of 114 to the lands delineated on this map and approve the filing thereof.
 LEISURE TECHNOLOGY NORTHEAST INC.
 [Signature]
 Date: 8/17/78

The Survey shows hereon the proposed boundaries of the Condominiums described herein consisting of a certain portion of the property described herein.
 [Signature]
 Date: 8/17/78

LEISURE VILLAGE WEST
 MANCHESTER TOWNSHIP, OCEAN COUNTY, N.J.
 FINAL MAP OF
 LEISURE VILLAGE WEST
 CONDOMINIUM NO. 29
 AMENDED
 [Signature]
 Date: 8/16/78



CONDOMINIUM 10
 CONDOMINIUM 12
 CONDOMINIUM 14

3
 2-3-2
 4-5-6