

FINAL APPROVAL
MANCHESTER TOWNSHIP PLANNING BOARD
 JUNE 14, 1977
John J. [Signature]
 Chairman
 Date

I have carefully examined this map and find that it conforms to the provisions of the municipal ordinance and requirements applicable thereto.
 7/11/77
[Signature]
 Township Engineer

I certify that the Manchester Township Planning Board has approved this map for filing in the town clerk's office and that this map is filed on or before
 7/11/77
[Signature]
 Secretary

FINAL APPROVAL
OCEAN COUNTY PLANNING BOARD
 This plan complies with the revised statutes 40:27-7 and 40:27-11
 6/16/77
[Signature]
 Chairman

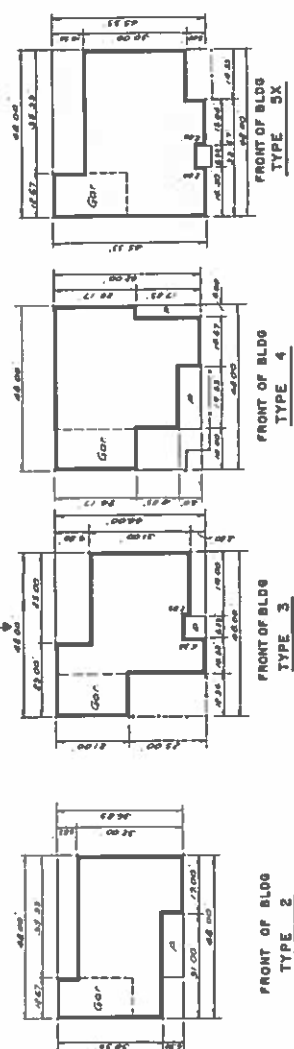
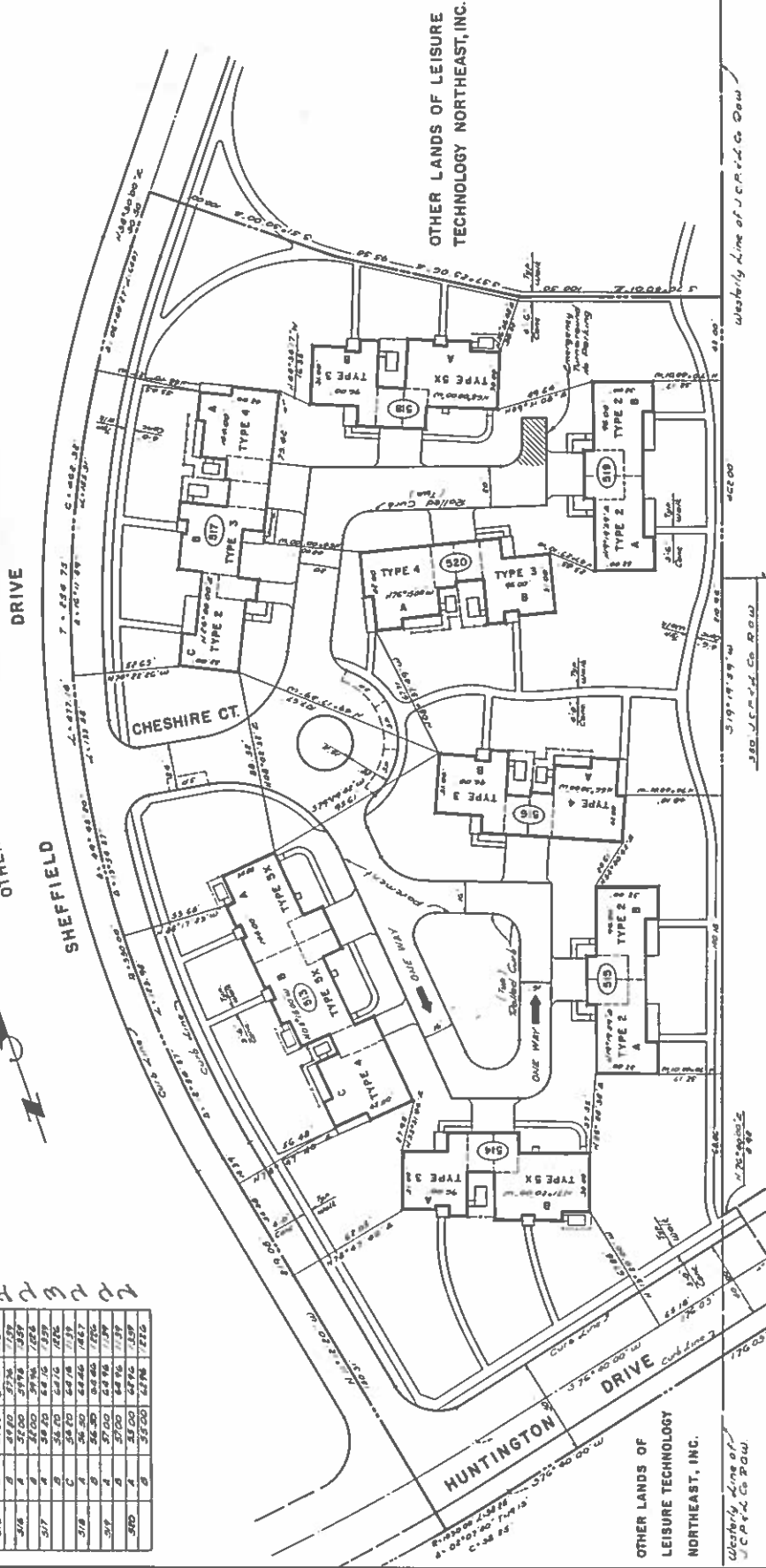
We hereby certify that we are the record holders of title to the lands shown herein and approve the filing of this map.
 7/18/77
 LEISURE TECHNOLOGY NORTHEAST, INC.
 1000 WILSON ROAD
 LEISURE VILLAGE WEST
 NOTARY PUBLIC
[Signature]
 Secretary

Revised 6/1/77 Complete location of utility lines & water lines to suit type 21
 Revised 4/1/77 General Revisions

MANCHESTER TOWNSHIP, OCEAN COUNTY, N.J.	DATE	BY
LEISURE VILLAGE WEST	6/1/77	J.P. [Signature]
CONDOMINIUM NO. 32	7/1/77	[Signature]
FINAL MAP OF	7/1/77	[Signature]
LEISURE VILLAGE WEST	7/1/77	[Signature]
CONDOMINIUM NO. 32	7/1/77	[Signature]

Prepared by: **Donald W. Smith Associates**
 ENGINEERS - PLANNERS - SURVEYORS
 40 Turner Road, Easton, N.J. 08821
 Phone: 609-761-1000

OTHER LANDS OF LEISURE TECHNOLOGY NORTHEAST, INC.



- NOTES:**
- All Elevations shown are to U.S.C. & G.S. Datum.
 - All Elevations shown are measured as of 2.11.77.
 - All Roads shown within the limits of the tract will be under private ownership.
 - All improvements shown are proposed as of 2.11.77.
 - Condominiums 22 contain 1,644 sq. ft. of area.
 - [22] indicates service of utilities as being permitted in rear service drives only in each designated parking areas. All other unimproved vehicles prohibited from parking in rear service drives.

Block	Lot	Area	Volume	Depth	Width
317	A	31.70	3976	125.7	14.57
317	B	31.70	3976	14.57	125.7
317	C	31.70	3976	14.57	125.7
317	D	31.70	3976	14.57	125.7
317	E	31.70	3976	14.57	125.7
317	F	31.70	3976	14.57	125.7
317	G	31.70	3976	14.57	125.7
317	H	31.70	3976	14.57	125.7
317	I	31.70	3976	14.57	125.7
317	J	31.70	3976	14.57	125.7
317	K	31.70	3976	14.57	125.7
317	L	31.70	3976	14.57	125.7
317	M	31.70	3976	14.57	125.7
317	N	31.70	3976	14.57	125.7
317	O	31.70	3976	14.57	125.7
317	P	31.70	3976	14.57	125.7
317	Q	31.70	3976	14.57	125.7
317	R	31.70	3976	14.57	125.7
317	S	31.70	3976	14.57	125.7
317	T	31.70	3976	14.57	125.7
317	U	31.70	3976	14.57	125.7
317	V	31.70	3976	14.57	125.7
317	W	31.70	3976	14.57	125.7
317	X	31.70	3976	14.57	125.7
317	Y	31.70	3976	14.57	125.7
317	Z	31.70	3976	14.57	125.7

OTHER LANDS OF L.T.N.E., INC.

2-3-4-5-6