

FINAL APPROVAL
MANCHESTER TOWNSHIP PLANNING BOARD

DATE: 7/11/77
Paul J. Gagnier
 Chairman
John D. ...
 Secretary

I have carefully examined this map and find that it conforms to the provisions of the municipal ordinance and requirements applicable thereto.

7/11/77
Walter G. Gagnier
 Township Engineer

I certify that the Manchester Township Planning Board has approved this map for filing in the Ocean County Clerk's Office provided this map is filed on or before 7/11/77.

7/11/77
James L. ...
 Secretary

FINAL APPROVAL
OCEAN COUNTY PLANNING BOARD

This plan complies with the revised statutes as of 7/1 and 60-67.7

DATE: April 1977
W. ...
 Chairman

We hereby certify that we are the record holders of title to the lands shown hereon and approve the filing of same.

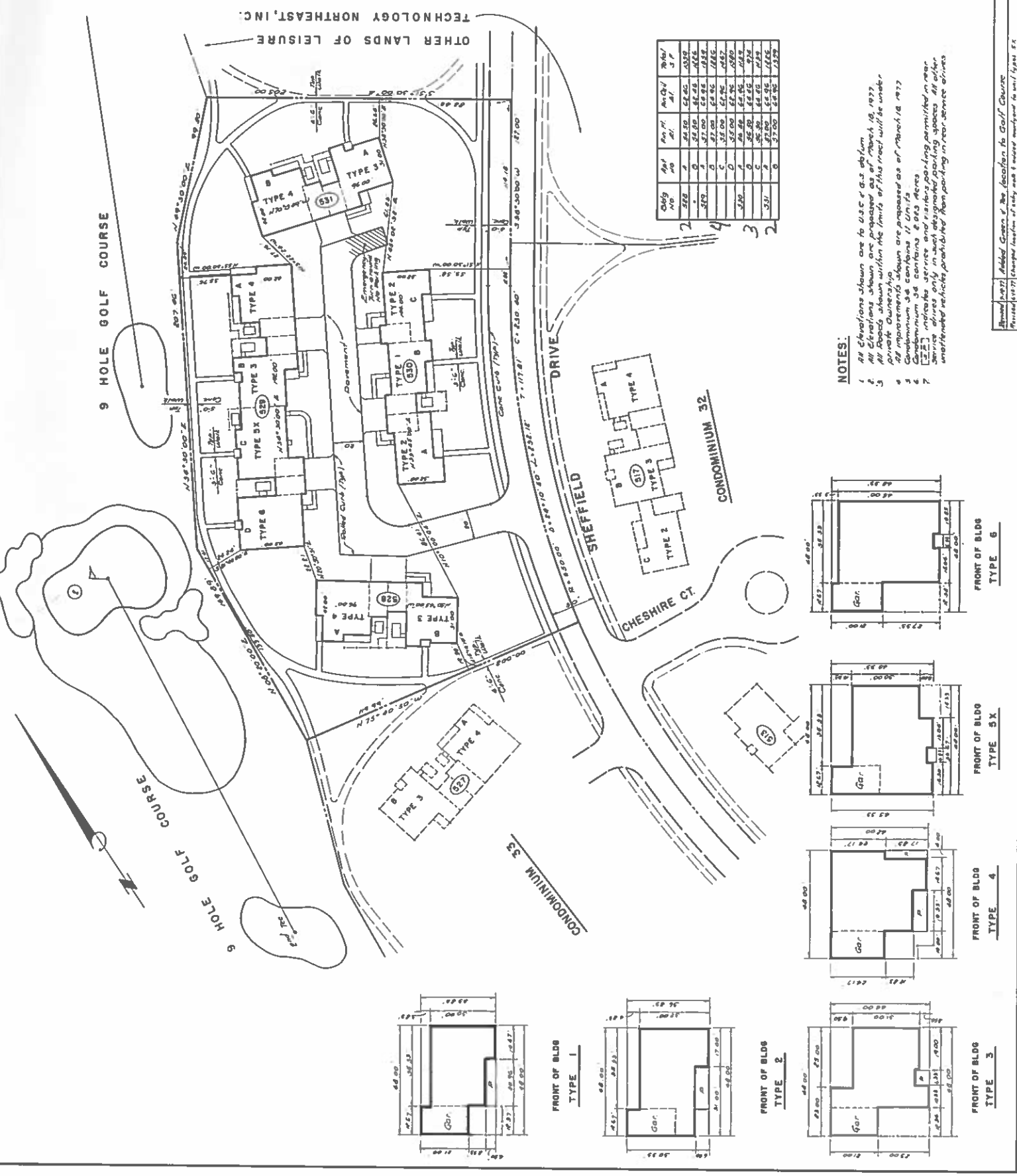
7/11/77
Paul J. Gagnier
 Vice President
Walter G. Gagnier
 Secretary

LEISURE TECHNOLOGY NORTHEAST, INC.
 BY: *Donald W. Smith*
 President

Approved 6/17/77 Added with an engineering "A" site Golf Course
 Planned 6/17/77 Gene D. ...

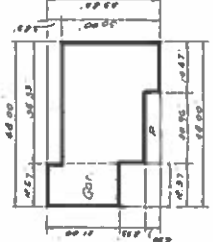
LEISURE VILLAGE WEST
 MANCHESTER TOWNSHIP, OCEAN COUNTY, N.J.
 FINAL MAP OF
 LEISURE VILLAGE WEST
 CONDOMINIUM NO. 34

Prepared by: *Donald W. Smith Associates*
 ENGINEERS - PLANNERS - SURVEYORS
 77, 780
 100 N. ...

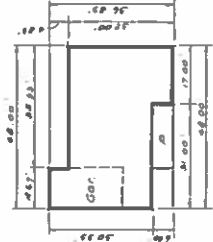


NOTES:

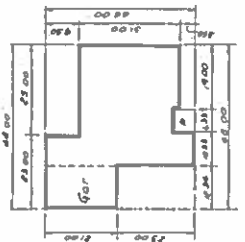
- All Elevations shown are to U.S.C. & G.S. datum.
- All Elevations shown are prepared as of March 10, 1977.
- All Areas shown within the limits of this tract will be under private ownership.
- All measurements shown are prepared as of March 10, 1977.
- Condominium 34 conforms to Ord. 15.
- Condominium 35 conforms to Ord. 15.
- Service drives only in such designated parking spaces. All other unattended vehicles prohibited from parking in rear service drives.



FRONT OF BLDG TYPE 1



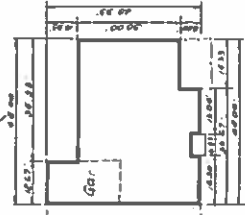
FRONT OF BLDG TYPE 2



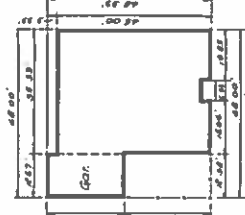
FRONT OF BLDG TYPE 3



FRONT OF BLDG TYPE 4



FRONT OF BLDG TYPE 5X



FRONT OF BLDG TYPE 6

2-2
 1-1
 1-1
 3-3
 4-4
 5-5
 6-6

Approved 6/17/77 Added to the location of Golf Course
 Planned 6/17/77 Changed location of entry road to better maneuver to suit layout of