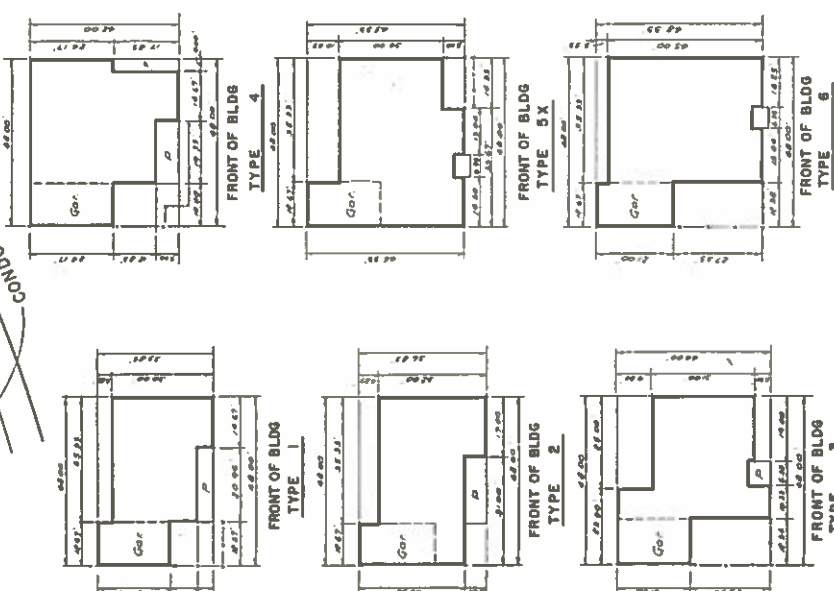
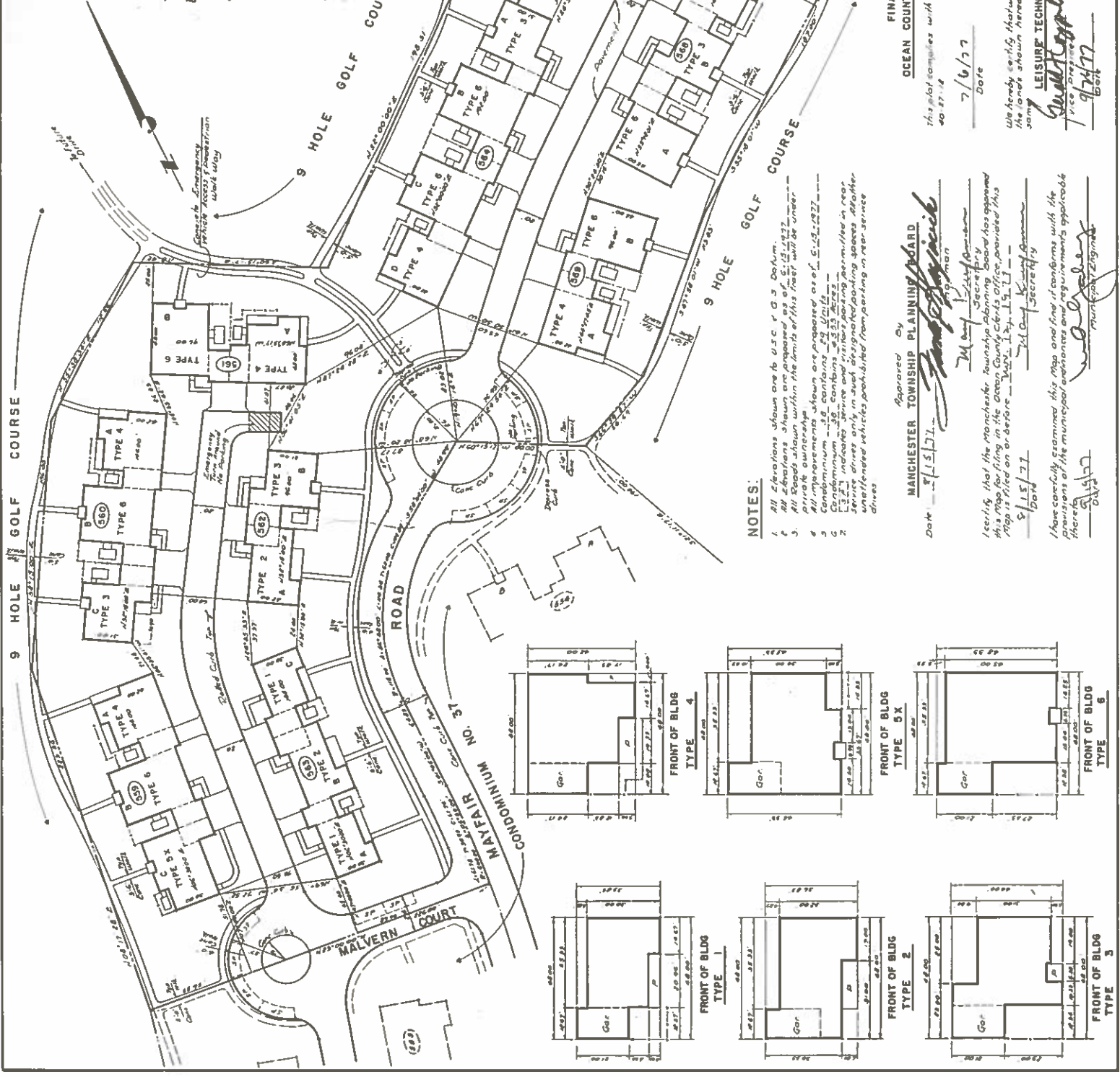


Blg No	Area	Area	Area	Area	Area
301	A	37.00	65.96	1.59	
302	B	37.00	65.96	1.59	
303	C	37.00	65.96	1.59	
304	D	37.00	65.96	1.59	
305	A	37.00	65.96	1.59	
306	B	37.00	65.96	1.59	
307	C	37.00	65.96	1.59	
308	D	37.00	65.96	1.59	
309	A	37.00	65.96	1.59	
310	B	37.00	65.96	1.59	
311	C	37.00	65.96	1.59	
312	D	37.00	65.96	1.59	
313	A	37.00	65.96	1.59	
314	B	37.00	65.96	1.59	
315	C	37.00	65.96	1.59	
316	D	37.00	65.96	1.59	
317	A	37.00	65.96	1.59	
318	B	37.00	65.96	1.59	
319	C	37.00	65.96	1.59	
320	D	37.00	65.96	1.59	
321	A	37.00	65.96	1.59	
322	B	37.00	65.96	1.59	
323	C	37.00	65.96	1.59	
324	D	37.00	65.96	1.59	
325	A	37.00	65.96	1.59	
326	B	37.00	65.96	1.59	
327	C	37.00	65.96	1.59	
328	D	37.00	65.96	1.59	
329	A	37.00	65.96	1.59	
330	B	37.00	65.96	1.59	
331	C	37.00	65.96	1.59	
332	D	37.00	65.96	1.59	
333	A	37.00	65.96	1.59	
334	B	37.00	65.96	1.59	
335	C	37.00	65.96	1.59	
336	D	37.00	65.96	1.59	
337	A	37.00	65.96	1.59	
338	B	37.00	65.96	1.59	
339	C	37.00	65.96	1.59	
340	D	37.00	65.96	1.59	



NOTES:
 1. All elevations shown are to U.S.C. & G.S. Datum.
 2. All buildings shown are proposed as of 5/15/77.
 3. All spaces shown within the limits of this tract will be under private ownership.
 4. All improvements shown are proposed as of 5/15/77.
 5. Condominium - 18 contains 18 Units.
 6. Condominium - 30 contains 30 Units.
 7. All units shown are to be constructed in rear of main drives only in such designated parking spaces. Higher unattended vehicles, prohibited from parking in rear service drives.

Approved by
MANCHESTER TOWNSHIP PLANNING BOARD
 Date 5/15/77
 Secretary
 5/15/77
 I have carefully examined this map and find it conforms with the provisions of the municipal ordinances and regulations applicable to the same.
 Municipal Engineer
 Date

FINAL APPROVAL
OCEAN COUNTY PLANNING BOARD
 This plan complies with the revised statutes 40:27.7 and 40:27-14
 Date 7/6/77
 Chairman
 We hereby certify that we are the record holders of title to the land shown herein and approve the filing of same.
LEISURE TECHNOLOGY NORTHEAST, INC.
 Secretary
 Date

LEISURE VILLAGE WEST
 MANCHESTER TOWNSHIP, OCEAN COUNTY, N.J.
FINAL MAP OF
LEISURE VILLAGE WEST
CONDOMINIUM NO. 38
 Prepared by **Donald W. Smith Associates**
 ENGINEERS - PLANNERS - SURVEYORS
 1751222
 40 Turner Road, Lakewood, N.J. 07034
 Phone 201-261-2500

6 5 -
 2 3 4 5 6