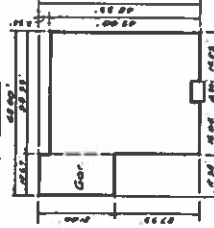
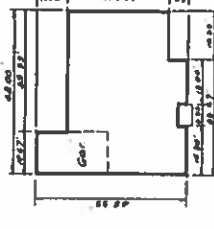
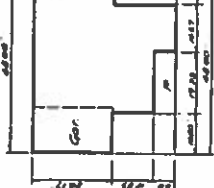
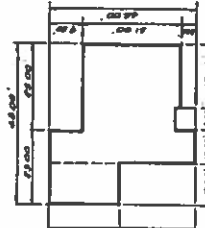
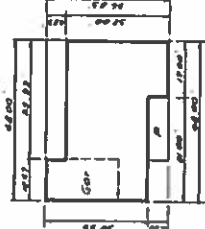
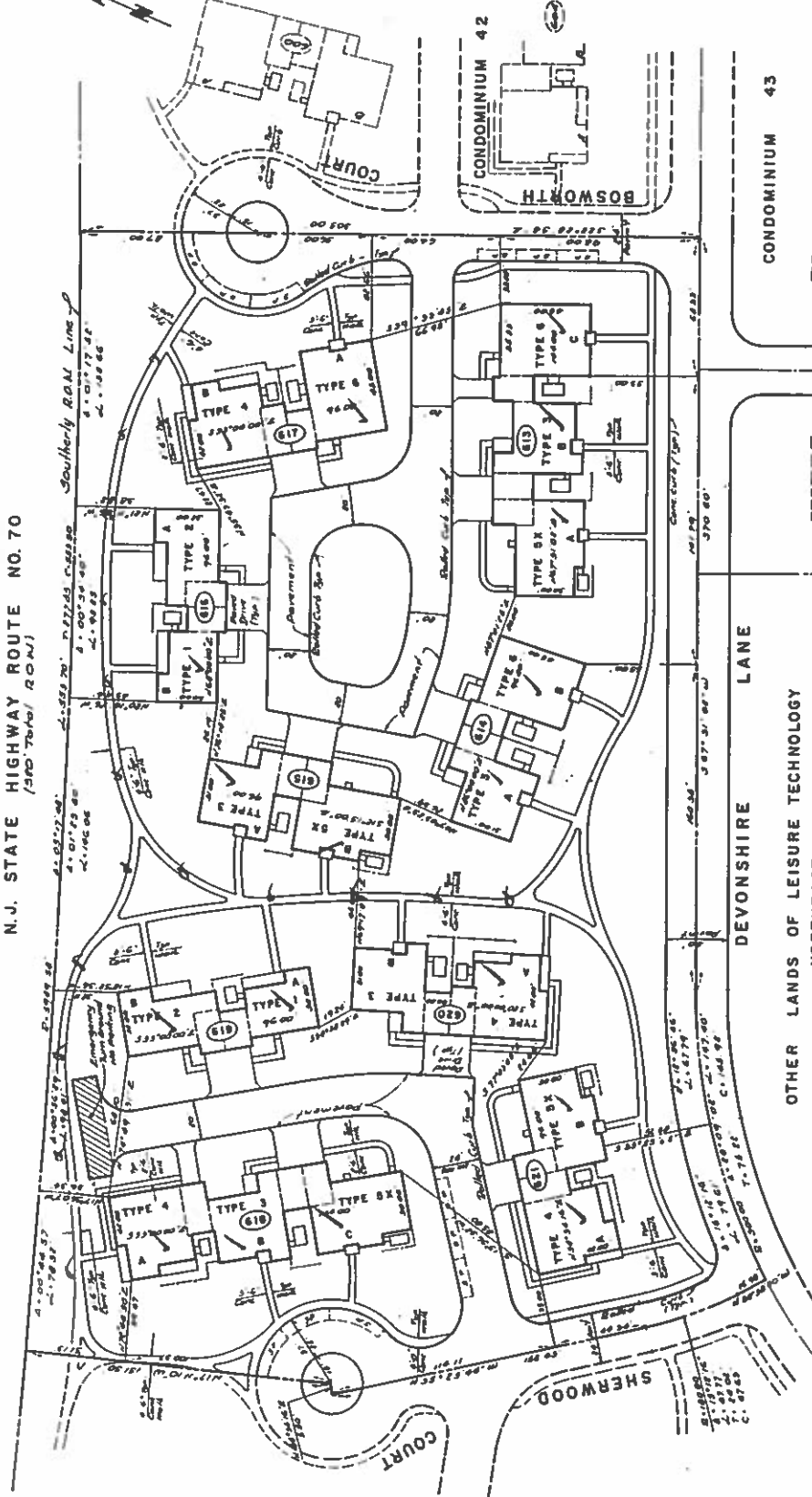


OTHER LANDS OF LEISURE TECHNOLOGY NORTH EAST, INC.

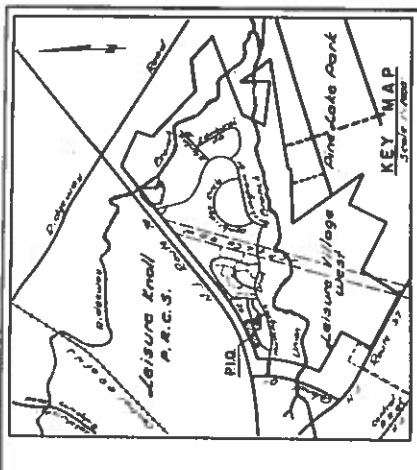


16 lights

W P S B S H

Blg No	Area	Per Ft Area	Total Area	Total Area
612	5	60.20	301.00	100.00
613	5	60.20	301.00	100.00
614	5	60.20	301.00	100.00
615	5	60.20	301.00	100.00
616	5	60.20	301.00	100.00
617	5	60.20	301.00	100.00
618	5	60.20	301.00	100.00
619	5	60.20	301.00	100.00
620	5	60.20	301.00	100.00
621	5	60.20	301.00	100.00
622	5	60.20	301.00	100.00
623	5	60.20	301.00	100.00
624	5	60.20	301.00	100.00
625	5	60.20	301.00	100.00
626	5	60.20	301.00	100.00
627	5	60.20	301.00	100.00
628	5	60.20	301.00	100.00
629	5	60.20	301.00	100.00
630	5	60.20	301.00	100.00
631	5	60.20	301.00	100.00
632	5	60.20	301.00	100.00
633	5	60.20	301.00	100.00
634	5	60.20	301.00	100.00
635	5	60.20	301.00	100.00
636	5	60.20	301.00	100.00
637	5	60.20	301.00	100.00
638	5	60.20	301.00	100.00
639	5	60.20	301.00	100.00
640	5	60.20	301.00	100.00

2-7  
3-2  
4-5  
5-6



NOTES:

1. All Elevations shown are to B.S. of G.S. datum.
2. All Elevations shown are proposed as of 9/23/77.
3. All Roads shown within the limits of this map will be water.
4. The proposed building are proposed as of 9/23/77.
5. Condominium #42, contains 40 units.
6. Condominium #43, contains 40 units.
7.  $\ominus$  indicates stairs and utility pentagon proposed in rear service drives only in front designated parking spaces. All other utility structures prohibited from parking in rear service drives.

OCEAN COUNTY PLANNING BOARD  
Date: 7/14/77.  
This plan complies with revised subtitle of 9/23/77 of 1977 as of 7/14/77.

Approved by  
*[Signature]*  
MANCHESTER TOWNSHIP PLANNING BOARD  
Date: 1/15/77...  
*[Signature]*  
Mayor Secoy

I certify that the Manchester Township Planning Board has approved this map for filing with Ocean County. Certificate number: 1977-10. The map is filed on or before: MARCH 15, 1978.

I have carefully examined this map and find it conforms with the standards of the Municipal Ordinance and requirements applicable thereto.  
Date: 1/26/77  
Secretary Secoy

I hereby certify that as the owner of the lands shown on this map and approved by the Planning Board of the Township of Manchester, I have caused a correct and true copy of this map to be filed with the County Clerk of Ocean County.

W. S. Smith, Jr.  
Secretary

**LEISURE VILLAGE WEST**  
MANCHESTER TOWNSHIP, OCEAN COUNTY, N.J. 08057  
**FINAL MAP OF**  
**LEISURE VILLAGE WEST**  
CONDOMINIUM NO. 44

623-77	623-77
624-77	624-77
625-77	625-77
626-77	626-77
627-77	627-77
628-77	628-77
629-77	629-77
630-77	630-77
631-77	631-77
632-77	632-77
633-77	633-77
634-77	634-77
635-77	635-77
636-77	636-77
637-77	637-77
638-77	638-77
639-77	639-77
640-77	640-77

**Approved with Donald W. Smith Associates**  
ENGINEERS - PLANNERS - SURVEYORS  
100 N. State Street, Asbury Park, N.J. 08901

No	Revision	Description
1	1	Proposed 1/2" scale building plan, showing all details.
2	2	Revised 1/2" scale building plan, showing all details.
3	3	Revised 1/2" scale building plan, showing all details.