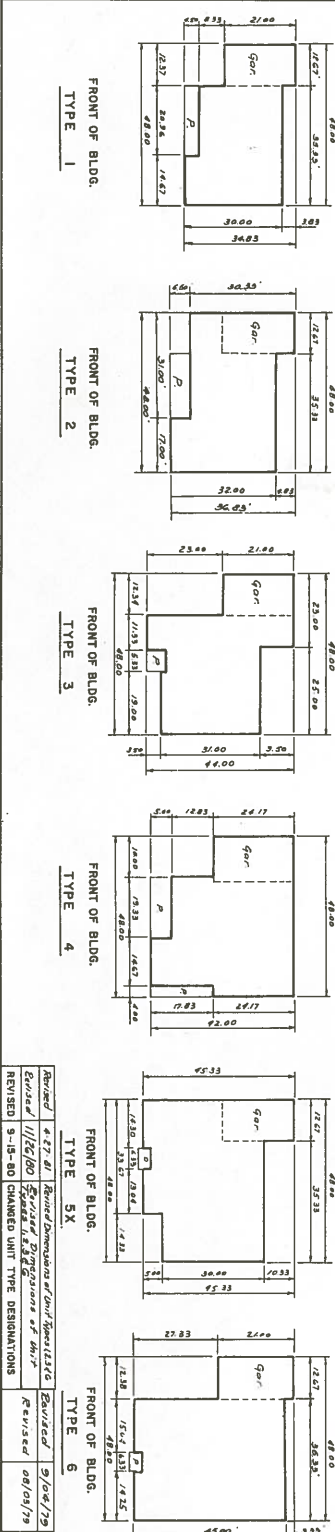
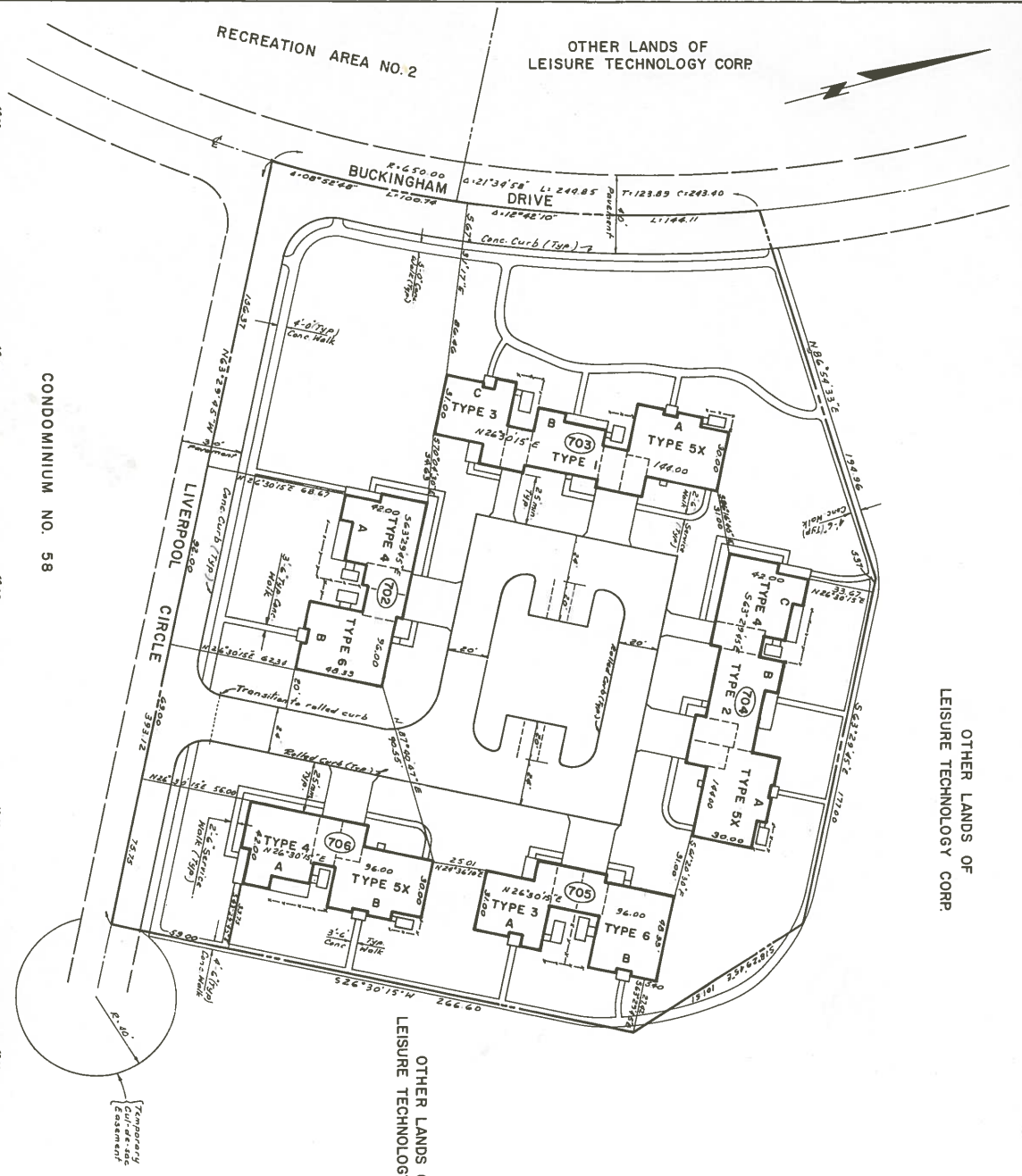


2-3  
3-2  
4-1  
5-6



Blgd No.	Typ	Fin. Fl. Elev.	Fin. Ceil. Elev.	Tot. Ht. Ft.
702	A	65.50	73.46	78.59
703	A	65.50	73.46	78.59
703	B	63.50	71.46	76.57
703	C	64.70	72.66	78.56
704	A	63.70	71.66	76.62
705	A	63.70	71.66	76.59
705	B	64.50	72.46	78.56
705	C	63.20	72.16	76.57

1.54 03-18-79 PLANNING 3-3K  
FINAL SITE PLAN APPROVAL  
DATE: 03-18-79  
MANCHESTER TOWNSHIP PLANNING BOARD  
OCEAN COUNTY PLANNING BOARD  
FINAL SITE PLAN APPROVAL  
DATE: 03-18-79  
MANCHESTER TOWNSHIP, N.J.  
OCEAN COUNTY, N.J.  
FINAL MAP OF LEISURE VILLAGE WEST CONDOMINIUM NO.53  
DONALD W. SMITH  
ENGINEERS - PLANNERS - SURVEYORS  
1001 W. 11th St. Atlantic City, N.J. 08401  
PHONE: 856-841-1111

MANCHESTER TOWNSHIP PLANNING BOARD  
Approved By  
Date: 9/11/79  
Secretary  
I certify that the Manchester Township Committee has approved this map for filing in the deed recording office provided this map is filed on or before 10/11/79.  
Date: 9/11/79  
I have carefully examined this map and find it conforms with the provisions of the municipal ordinances and requirements applicable to the same.  
Date: 10/15/79  
Secretary

NOTES:  
1. All elevations shown are to U.S.C & G.S datum.  
2. All elevations shown are prepared as of 5-15-79.  
3. All depths shown within the limits of this tract will be under 4 feet.  
4. All improvements shown are prepared as of 5-15-79.  
5. Condominium 53 contains 12 units.  
6. Condominium 53 contains 2,899 acres.  
7. [Symbol] indicates service and visitors parking permitted in residential areas only in such designated parking spaces. All other service drives only in such designated parking spaces. All other streets and driveway to be operated in accordance with the provisions of the Municipal Code of Manchester.  
8. All streets and driveway to be operated in accordance with the provisions of the Municipal Code of Manchester.

