

1067	A	1587	90.00	98.89
1068	A	1588	90.00	97.00
1069	A	1589	90.00	97.00
1070	A	1590	90.00	96.89
1071	A	1591	90.00	97.19
1072	A	1592	90.00	97.19
1073	A	1593	90.00	96.89
1074	A	1594	90.00	96.89
1075	A	1595	90.00	96.89
1076	A	1596	90.00	96.89
1077	A	1597	90.00	96.89
1078	A	1598	90.00	96.89
1079	A	1599	90.00	96.89
1080	A	1600	90.00	96.89
1081	A	1601	90.00	96.89
1082	A	1602	90.00	96.89
1083	A	1603	90.00	96.89
1084	A	1604	90.00	96.89
1085	A	1605	90.00	96.89
1086	A	1606	90.00	96.89
1087	A	1607	90.00	96.89
1088	A	1608	90.00	96.89
1089	A	1609	90.00	96.89
1090	A	1610	90.00	96.89
1091	A	1611	90.00	96.89
1092	A	1612	90.00	96.89
1093	A	1613	90.00	96.89
1094	A	1614	90.00	96.89
1095	A	1615	90.00	96.89
1096	A	1616	90.00	96.89
1097	A	1617	90.00	96.89
1098	A	1618	90.00	96.89
1099	A	1619	90.00	96.89
1100	A	1620	90.00	96.89

**NOTES:**  
 1 All Elevations shown are to U.S.C.S. datum.  
 2 All Elevations shown are proposed as of 11-5-86.  
 3 All Roads shown within the limits of this tract will be under private ownership.  
 4 All improvements shown are proposed as of 11-5-86.  
 5 All lots shown are 52' wide.  
 6 All lots shown are 90' deep.  
 7 All lots shown are 90' wide.

OCEAN COUNTY PLANNING BOARD  
 FINAL SITE PLAN APPROVAL  
 DATE: 2/15/86  
 CHAIRMAN: [Signature]

MANCHESTER TOWNSHIP PLANNING BOARD  
 2/15/86  
 [Signature]  
 [Signature]  
 [Signature]

I certify that the "Substantive" map planning board has approved this map for filing in the Ocean County Clerk's Office, provided this map is filed on or before MARCH 20, 1986.  
 12/15/86  
 [Signature]  
 [Signature]

I have carefully examined this map and find it conforms with the provisions of the municipal ordinance and requirements applicable thereto.  
 [Signature]  
 [Signature]

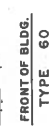
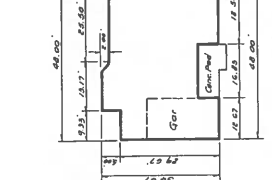
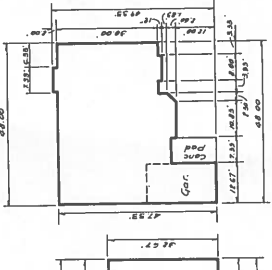
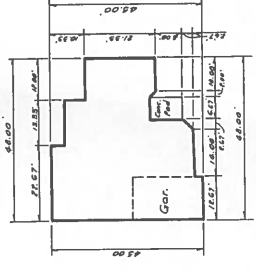
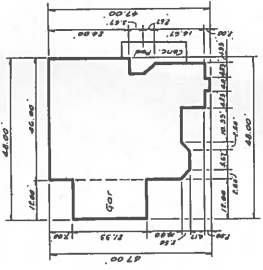
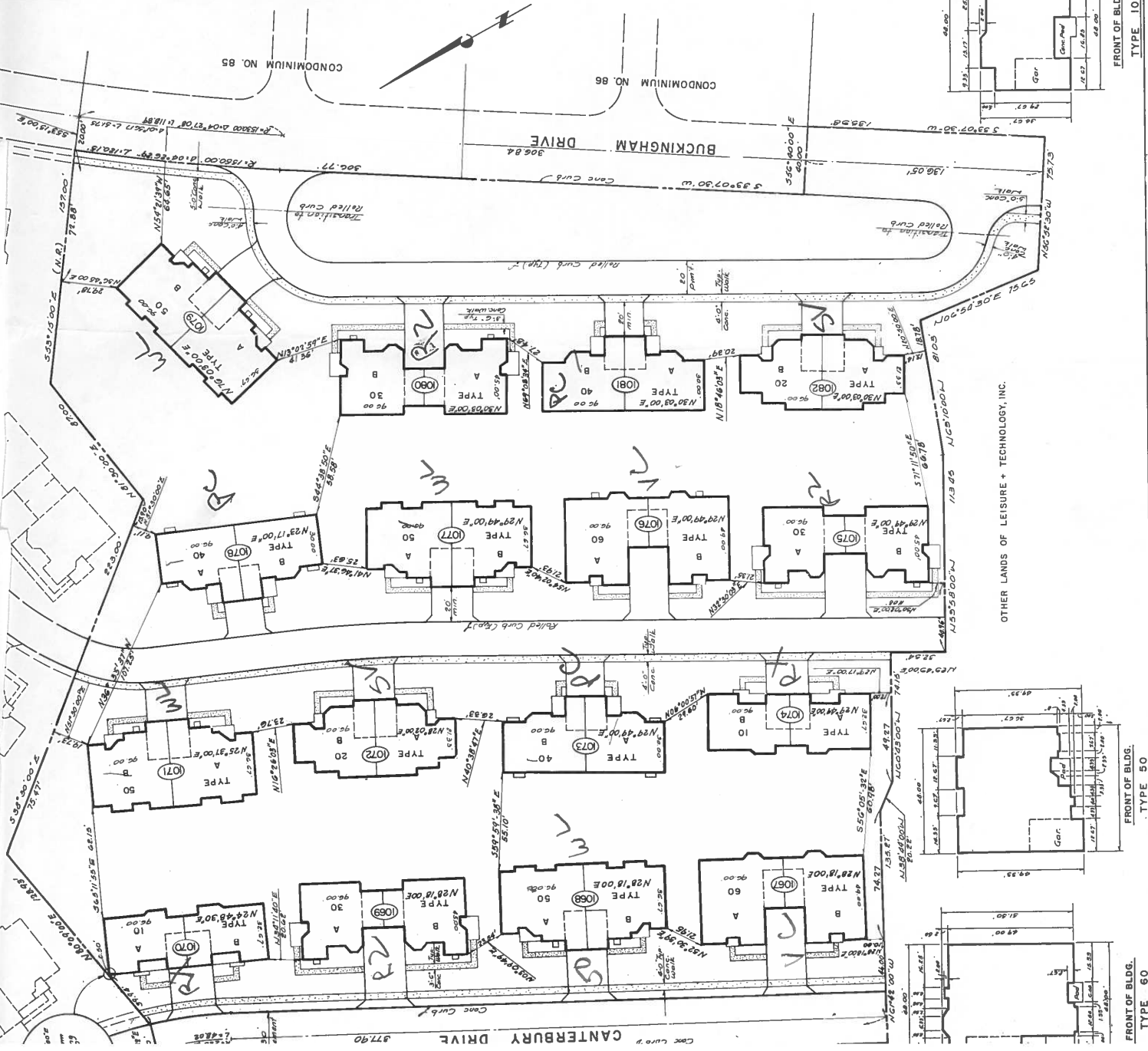
I hereby certify that we are the duly authorized agents to be and are delineated on this map and are not to be altered.  
 [Signature]  
 [Signature]

LEISURE + TECHNOLOGY INC.  
 Vice President  
 [Signature]  
 [Signature]

Established  
 [Signature]  
 [Signature]  
 [Signature]

LEISURE VILLAGE WEST  
 MANCHESTER TOWNSHIP, OCEAN COUNTY, N.J.  
 FINAL MAP OF  
 LEISURE VILLAGE WEST  
 CONDOMINIUM NO. 87

Donach W. Smith Associates  
 ENGINEERS - PLANNERS - SURVEYORS  
 40 Newport Road, Lakewood, N.J. 07033  
 Telephone: 908-881-1111  
 Fax: 908-881-1112



OTHER LANDS OF LEISURE + TECHNOLOGY, INC.