

NOTES:

- All elevations shown are in U.S.S. datum.
- All elevations shown are proposed as of July 31, 1988.
- All roads shown within the limits of this tract will be under private ownership.
- All improvements shown are proposed as of July 31, 1988.
- Condominium units are shown as of July 31, 1988.
- Condominium units are shown as of July 31, 1988.
- Service drives only in such designated parking spaces. All other unattended vehicles prohibited from parking in rear service drives.

Approved By
James A. Johnson
 Secretary

Date: 11/30/87

I certify that the Manchester Twp Planning Board has approved this map for filing in the Ocean County Clerk's Office, provided this map is filed on or before MARCH 6, 1988.

Alley Krasnowski
 Secretary

I have carefully examined this map and find it conforms with the provisions of the municipal ordinances and requirements applicable hereto.

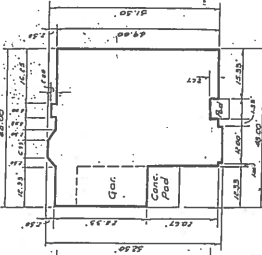
Henry B. Broughton
 Municipal Engineer

LEISURE+TECHNOLOGY, INC.
 Vice President: **James A. Johnson**
 Secretary: **Alley Krasnowski**

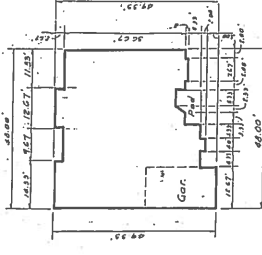
The survey shown hereunder is a true and correct representation of the improvement shown on this map.

Donald W. Smith, P.E., L.S., L.C.S.
 Surveyor

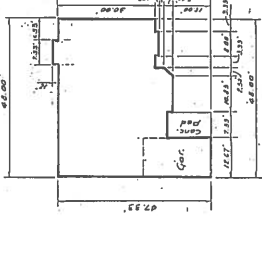
BLDG. NO.	UNIT NO.	FOOTPRINT	FIN. FL.	FIN. CEIL.
1205	A	7257	68.60	70.59
1205	B	7257	68.60	70.59
1206	A	7257	68.60	70.59
1206	B	7257	68.60	70.59
1207	A	7257	68.60	70.59
1207	B	7257	68.60	70.59
1208	A	7257	68.60	70.59
1208	B	7257	68.60	70.59
1209	A	7257	68.60	70.59
1209	B	7257	68.60	70.59
1210	A	7257	68.60	70.59
1210	B	7257	68.60	70.59
1211	A	7257	68.60	70.59
1211	B	7257	68.60	70.59
1212	A	7257	68.60	70.59
1212	B	7257	68.60	70.59
1213	A	7257	68.60	70.59
1213	B	7257	68.60	70.59
1214	A	7257	68.60	70.59
1214	B	7257	68.60	70.59



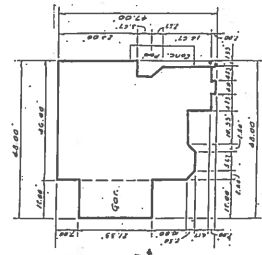
FRONT OF BLDG. TYPE 60



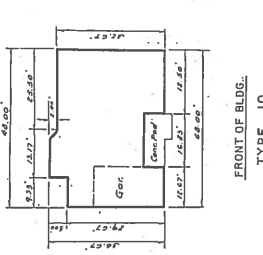
FRONT OF BLDG. TYPE 50



FRONT OF BLDG. TYPE 40

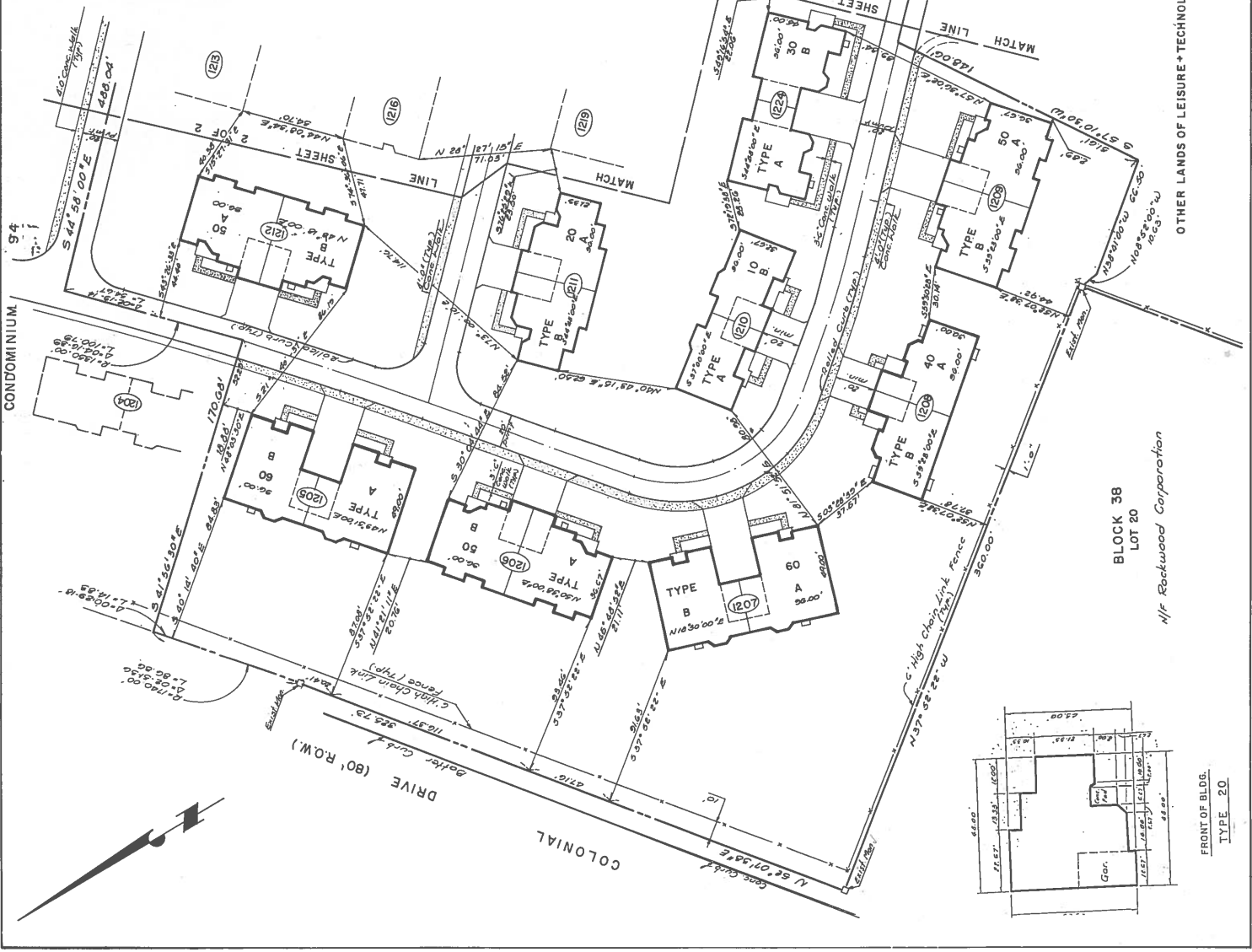


FRONT OF BLDG. TYPE 30



FRONT OF BLDG. TYPE 10

OCEAN COUNTY PLANNING BOARD
 FINAL PLAN APPROVAL
 DATE: 11/30/87
 Chairman: **James A. Johnson**



FRONT OF BLDG. TYPE 20

OTHER LANDS OF LEISURE+TECHNOLOGY, INC.

BLOCK 38
 LOT 20
 N/F Rockwood Corporation

02-2