

- NOTES:**
- All elevations shown are to U.S.S. datum.
 - Sections shown are proposed as of July 23, 1987.
 - Gravels shown within the limits of this tract will be under private ownership.
 - All measurements shown are based on a date of July 23, 1987.
 - Condominium 97 contains 18 Units.
 - Condominium 97 contains 288 sq. ft. of parking area.
 - Sections only in such designated parking spaces as to other unimproved parcels prohibited from parking motor service drives.

Approved By
MANCHESTER TOWNSHIP PLANNING BOARD
 Date 10/1/87
Walter A. Mann
Mary Kayman

Accepted by
 Date 10/1/87
Mary Kayman
 Secretary
Angie Beaudet
 Municipal Engineer

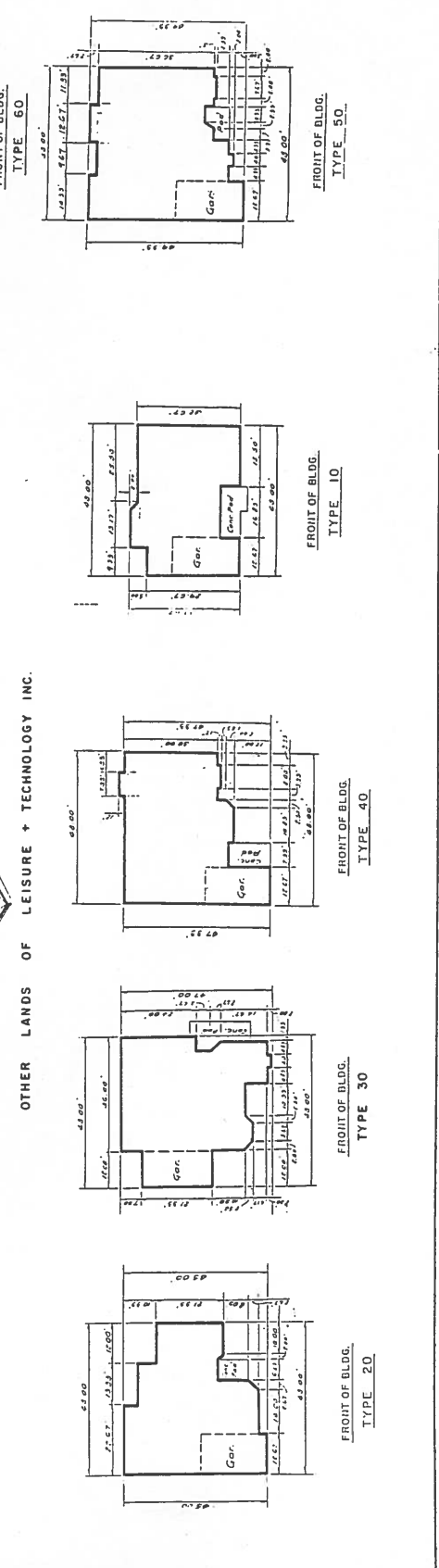
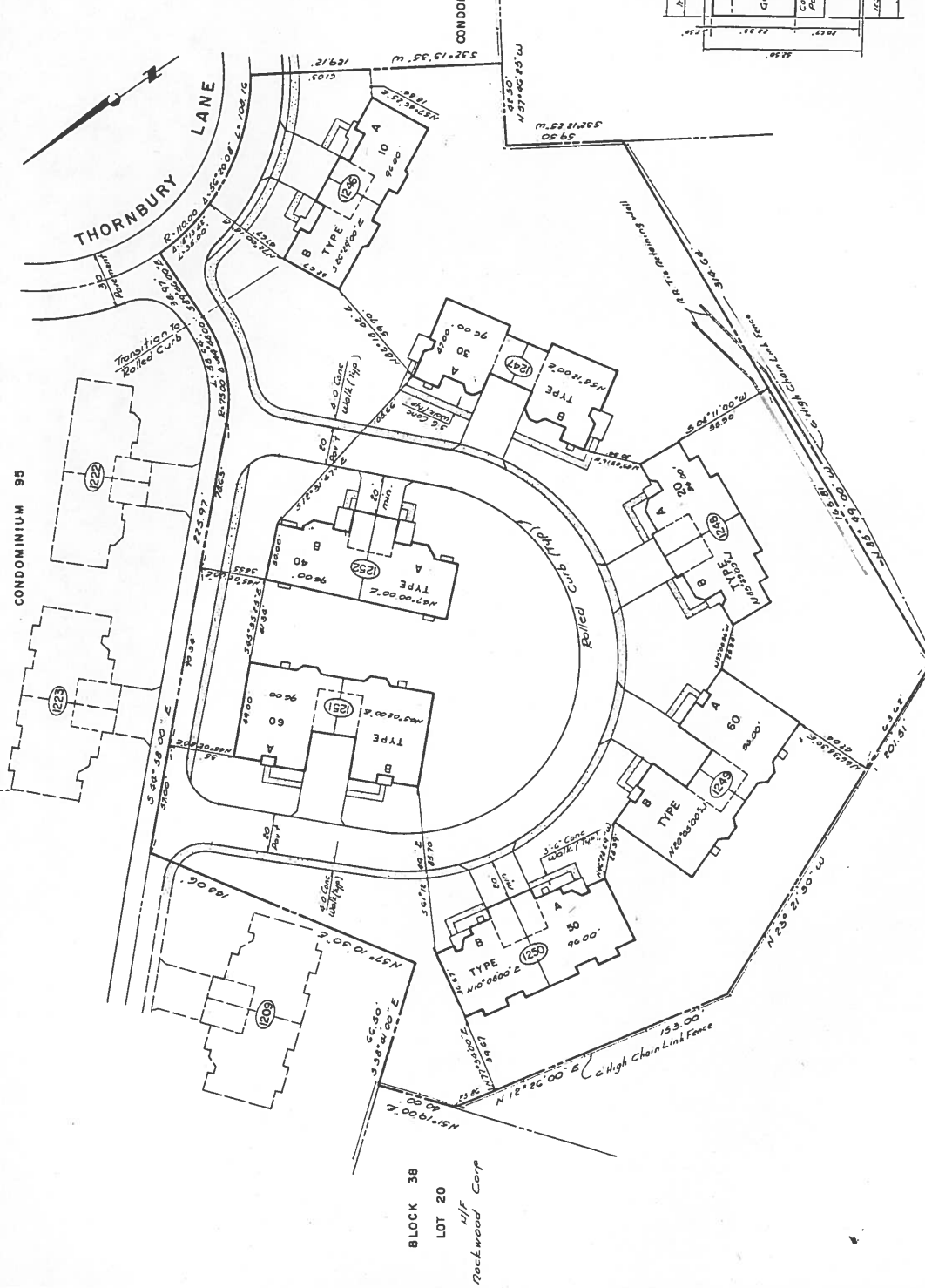
I hereby certify that these are the record copies of this map as delineated on this map and as shown on the title sheet.

LEISURE + TECHNOLOGY INC.
 Vice President
 Secretary
 Treasurer
 Manager

LEISURE VILLAGE WEST	
MANCHESTER TOWNSHIP, OCEAN COUNTY, N.J.	
FINAL MAP OF	
LEISURE VILLAGE WEST	
CONDOMINIUM NO. 97	
DATE	10/1/87
BY	W.A.M.
FOR	M.T.C.
BY	W.A.M.
FOR	M.T.C.
DATE	10/1/87
BY	W.A.M.
FOR	M.T.C.

BLDG. NO.	UTILITY SOURCE	FIN. CEILING ELEV.	FIN. CEILING ELEV.	
1186	A	1187	72.80	64.89
1187	B	1187	72.80	64.89
1188	A	1187	72.80	64.89
1189	B	1187	72.80	64.89
1190	A	1187	72.80	64.89
1191	B	1187	72.80	64.89
1192	A	1187	72.80	64.89
1193	B	1187	72.80	64.89
1194	A	1187	72.80	64.89
1195	B	1187	72.80	64.89
1196	A	1187	72.80	64.89
1197	B	1187	72.80	64.89
1198	A	1187	72.80	64.89
1199	B	1187	72.80	64.89
1200	A	1187	72.80	64.89
1201	B	1187	72.80	64.89
1202	A	1187	72.80	64.89
1203	B	1187	72.80	64.89
1204	A	1187	72.80	64.89
1205	B	1187	72.80	64.89
1206	A	1187	72.80	64.89
1207	B	1187	72.80	64.89
1208	A	1187	72.80	64.89
1209	B	1187	72.80	64.89
1210	A	1187	72.80	64.89
1211	B	1187	72.80	64.89
1212	A	1187	72.80	64.89
1213	B	1187	72.80	64.89
1214	A	1187	72.80	64.89
1215	B	1187	72.80	64.89
1216	A	1187	72.80	64.89
1217	B	1187	72.80	64.89
1218	A	1187	72.80	64.89
1219	B	1187	72.80	64.89
1220	A	1187	72.80	64.89
1221	B	1187	72.80	64.89
1222	A	1187	72.80	64.89
1223	B	1187	72.80	64.89
1224	A	1187	72.80	64.89
1225	B	1187	72.80	64.89
1226	A	1187	72.80	64.89
1227	B	1187	72.80	64.89
1228	A	1187	72.80	64.89
1229	B	1187	72.80	64.89
1230	A	1187	72.80	64.89
1231	B	1187	72.80	64.89
1232	A	1187	72.80	64.89
1233	B	1187	72.80	64.89
1234	A	1187	72.80	64.89
1235	B	1187	72.80	64.89
1236	A	1187	72.80	64.89
1237	B	1187	72.80	64.89
1238	A	1187	72.80	64.89
1239	B	1187	72.80	64.89
1240	A	1187	72.80	64.89
1241	B	1187	72.80	64.89
1242	A	1187	72.80	64.89
1243	B	1187	72.80	64.89
1244	A	1187	72.80	64.89
1245	B	1187	72.80	64.89
1246	A	1187	72.80	64.89
1247	B	1187	72.80	64.89
1248	A	1187	72.80	64.89
1249	B	1187	72.80	64.89
1250	A	1187	72.80	64.89
1251	B	1187	72.80	64.89
1252	A	1187	72.80	64.89
1253	B	1187	72.80	64.89
1254	A	1187	72.80	64.89
1255	B	1187	72.80	64.89
1256	A	1187	72.80	64.89
1257	B	1187	72.80	64.89
1258	A	1187	72.80	64.89
1259	B	1187	72.80	64.89
1260	A	1187	72.80	64.89
1261	B	1187	72.80	64.89
1262	A	1187	72.80	64.89
1263	B	1187	72.80	64.89
1264	A	1187	72.80	64.89
1265	B	1187	72.80	64.89
1266	A	1187	72.80	64.89
1267	B	1187	72.80	64.89
1268	A	1187	72.80	64.89
1269	B	1187	72.80	64.89
1270	A	1187	72.80	64.89
1271	B	1187	72.80	64.89
1272	A	1187	72.80	64.89
1273	B	1187	72.80	64.89
1274	A	1187	72.80	64.89
1275	B	1187	72.80	64.89
1276	A	1187	72.80	64.89
1277	B	1187	72.80	64.89
1278	A	1187	72.80	64.89
1279	B	1187	72.80	64.89
1280	A	1187	72.80	64.89
1281	B	1187	72.80	64.89
1282	A	1187	72.80	64.89
1283	B	1187	72.80	64.89
1284	A	1187	72.80	64.89
1285	B	1187	72.80	64.89
1286	A	1187	72.80	64.89
1287	B	1187	72.80	64.89
1288	A	1187	72.80	64.89
1289	B	1187	72.80	64.89
1290	A	1187	72.80	64.89
1291	B	1187	72.80	64.89
1292	A	1187	72.80	64.89
1293	B	1187	72.80	64.89
1294	A	1187	72.80	64.89
1295	B	1187	72.80	64.89
1296	A	1187	72.80	64.89
1297	B	1187	72.80	64.89
1298	A	1187	72.80	64.89
1299	B	1187	72.80	64.89
1300	A	1187	72.80	64.89

Note: Finish Ceiling Elev. shown is min. as shown on Architects Plans. It does not reflect Cathedral Ceilings.



OTHER LANDS OF LEISURE + TECHNOLOGY INC.

Block 38
 Lot 20
 N/H
 Rockwood Corp